

craft express®

www.craftheatpress.com

Innovative Heat Press Solutions

Craft Heat Presses, Printers, Tools & Accessories

craft express®



+86-13147045331



info@craftheatpress.com



+86-20-83375464/
83314360/83311437



www.craftheatpress.com



Office

Rm 4411, Grandview East International Plaza, No 372, Huanshi Dong Road, Yuexiu District, 510060 Guangzhou, China



Warehouse

Kehong Industrial Zone, No. 101 Tianyi East Ring Road, Nansha District, Guangzhou, 511453, China



Factory

Xiegang Town, Dongguan City, China



CraftExpress

VERSION: 202309





Heat Press Factory

The CraftHeatPress factory is located in Dongguan city, Guangdong Province. After years of development, we have gained professional experience in the production of heat presses, a powerful production team and a complete quality control process, and our current monthly output has reached 6,000 units. Plus, our development, sampling, testing, production and logistics have corresponding quality control processes to ensure every machine delivered to our customers is reliable.



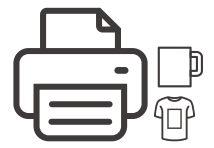
Premium Accessories



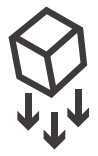
Precision Cut Forging



Production Test



Printing Test



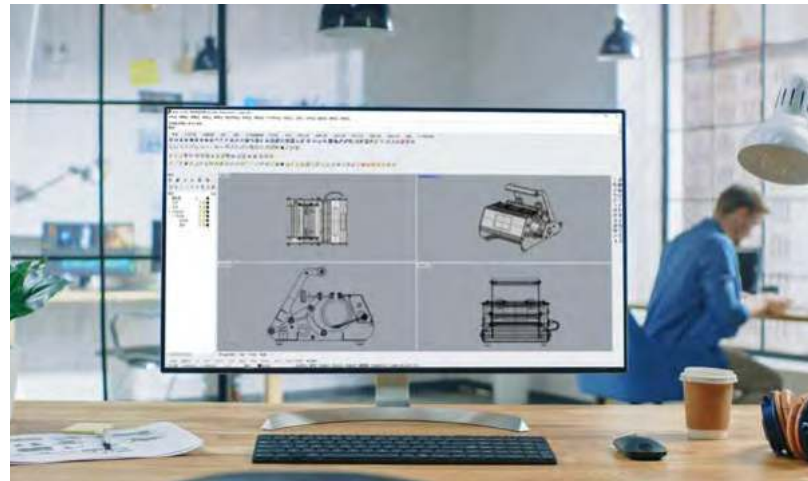
Anti-drop Test



Random Inspection Before Shipping

Professional Design & Development Team

We have a professional design and development team for heat presses, always sensitive to the market and attentive to user needs, to develop the most simple to use, durable and reliable heat presses. Each piece of heat press is developed from our customers' aesthetic and usage needs so that your creativity is not constrained.



OEM & ODM

We are always researching for the best equipment structure, the most reasonable cost, and the best user experience, and we value every customer feedback and continuous improvement.

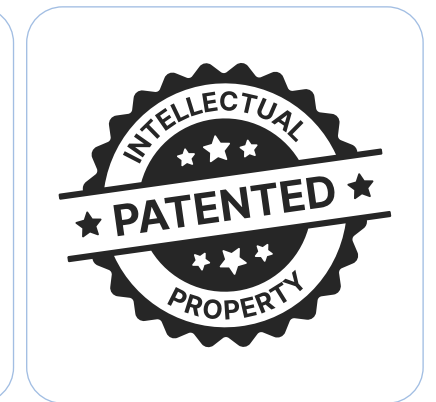
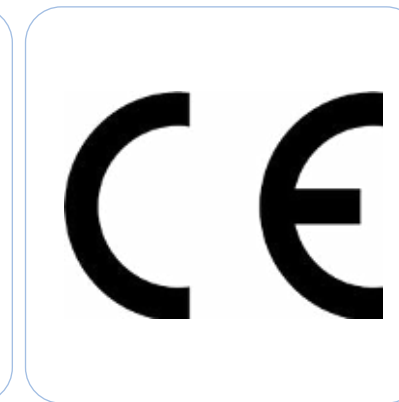
As a professional manufacturer of craft heat presses, we offer OEM (Original Equipment Manufacturer) and ODM (Original Design Manufacturer) services to our customers, retaining the maximum creativity of the customers for the heat presses, as well as providing the existing heat press designs for customers to customize their logos.

Technical Approvals & Certifications

With two decades of developing, researching and manufacturing, our heat presses stand out for their exceptional, reliable performance and up-to-date printing solutions.

We're committed to creating more user-friendly and patent-protected craft heat presses with a creative appearance & compact design to ensure our customer's benefit and help them advance their business. The heat presses are rigorously tested and widely recognized by global certifications, ETL, CE & RoHS compliant with LVD and EMC certification.

These patented innovations represent our dedication to ongoing improvement and development of advanced solutions in the heat press industry. With a blend of certified safety, patented advancements, and excellent performance, our heat presses offer an unparalleled combination of quality, reliability, and innovation.





How to Choose Heat Press?



Tumbler Heat Presses

Compact mug press, efficient two-station tumbler heat press or beginner-friendly tumbler press, explore diverse printing solutions for your mugs & tumblers customization.



Sublimation Ovens

Highly efficient printing solutions for a wide variety of extra-large, small or irregularly shaped drinkware, from 1.5oz to 64oz, solve all kinds of your printing challenges!



Craft Heat Presses

From mini easy press to small format craft heat press, a wide range of compact and affordable heat presses offer a full range of printing solutions for hats, bags, pillowcases, tiles, slates, ornaments and more sublimation flat items to start your DIY craft business.



Garment Heat Presses

Wider printing range for more efficient batch making. Swing-away and clamshell designs can meet your different operating experiences on printing T-shirts, photo panels and garments.



Elite Tumbler Heat Press



CE-MP270PLB
Light Blue



CE-MP270PPK
Pink



CE-MP270PWH
White



CE-MP270PLGR
Light Green



CE-MP280HCGR
Cyan Green



CE-MP270HLBGT
Light Blue(Glitter)



CE-MP270HPRGT
Pink(Glitter)



CE-MP280HTSLBW
Light Blue/White

Touch Control Panel

Power	500W-750W MAX±5%
Voltage	220V / 110V 50~60Hz
Temp. Range	32-482 °F (0-250°C)
Time Range	0-999 seconds
N.M.	8.6KG

Two Options Pro



Pro Max



Elite Tumbler Press Heating Attachments Available



MP270P-BD30
Compatible Diameter: 7.2-8.8cm
Max. Printable Length: 24cm



MP270P-BD20S
Compatible Diameter: 6-7.1cm
Max. Printable Length: 24cm



MP270P-BD20
Compatible Diameter: 7-8cm
Max. Printable Length: 20.3cm



MP270P-BD17V / Conic
Upper Diameter: 5.5-6.4cm
Lower Diameter: 8-8.8cm
Max. Printable Length: 15cm



MP270P-BD30T
For 30oz Travel Mug



MP270P-BD12V / Conic
Upper Diameter: 6-7cm
Lower Diameter: 8.8-10cm
Max. Printable Length: 10cm



MP270P-BD11
Compatible Diameter: 7.2-8.7cm
Max. Printable Length: 9.5cm



MP270P-BD10
Compatible Diameter: 6.5-8.1cm
Max. Printable Length: 9.5cm



MP270P-BD12E / Wine Glass
For 12oz Wine Tumbler Heater



MP270P-BD3V / Conic
For 3oz Shot Mug



MP270P-BD3
Compatible Diameter: 4.8-5.8cm
Max. Printable Length: 6.2cm



MP270P-BD15V / Conic
Upper Diameter: 3.5-4.2cm
Lower Diameter: 4.9-5.6cm
Max. Printable Length: 6.2cm



MP280-BD32
Compatible Diameter: 8.8-10.2cm
Max. Printable Length: 25cm

**Pro Max
Exclusive
Heater**



CE-MP270H-ZB
Main Board for CE-MP270H

All In One Combo Tumbler Mug Heat Press Collection

Item No.	Combo	Heating Attachments
CE-MP280H-11IN1 <i>(Pro max only)</i>	11 in 1	MP280-BD32, MP270P-BD30, MP270P-BD20S, MP270P-BD20, MP270P-BD17V, MP270P-BD12V, MP270P-BD11, MP270P-BD12E , MP270P-BD15V , MP270P-BD3, MP270P-BD10
CE-MP270P-10IN1	10 in 1	MP270P-BD30, MP270P-BD20S, MP270P-BD20, MP270P-BD17V, MP270P-BD12V, MP270P-BD11, MP270P-BD12E , MP270P-BD15V , MP270P-BD3, MP270P-BD10
CE-MP270P-4IN1	4 in 1	MP270P-BD30, MP270P-BD11, MP270P-BD10, MP270P-BD12E
CE-MP280H-3IN1 <i>(Pro max only)</i>	3 in 1	MP280-BD32, MP270P-BD30, MP270P-BD12E
CE-MP280H-2IN1	2 in 1	MP270P-BD30, MP270P-BD20S
CE-MP280H2IN1LBW-3040	2 in 1	MP280-BD32, MP270P-BD30

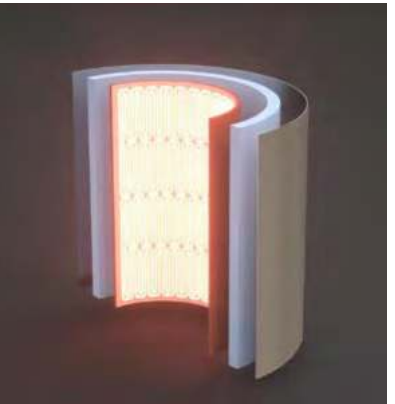
Craft Hobby Mug Press



Save on Heating Attachments
Compatible with heating attachments of previous elite tumbler heat presses.



Ideal Gift Idea
The stylish and portable design makes it a great holiday gift for friend and family.



Upgraded Heating Attachment
It provides longer service life and even heating for each print.



Touch Screen Panel
The digital control meter features a large and touchscreen design, the mode setting is very easy to set up and operate even for beginners.



Compatible Diameter:
2.83-3.42in/7.2-8.7cm
Max. Printable Length:
3.74in/9.5cm
Support Full & Partial Printing
11-15oz and More sublimation straight mugs

Item No.	CE-MP11TSLB
Power	300W MAX±5%
Voltage	220V / 110V 50~60Hz
Temp. Range	32-482 °F (0-250°C)
Time Range	0-999 seconds
N.M.	4.2KG

Craft Hobby Pro Tumbler Heat Press



Save on Heating Attachments
Compatible with heating attachments of previous elite tumbler heat presses.



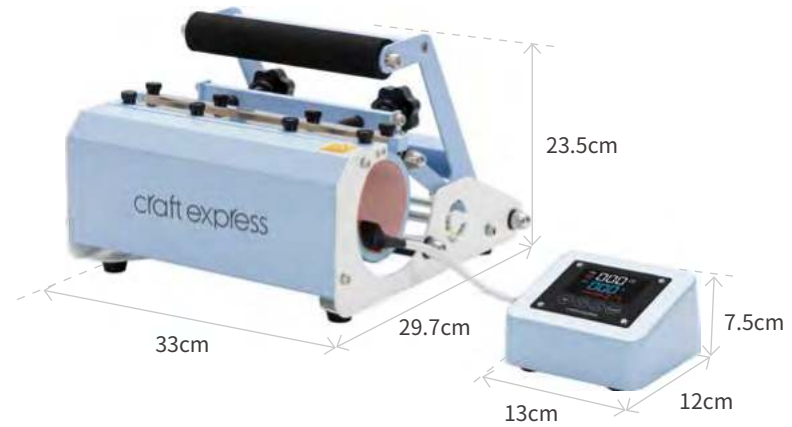
New Exterior Design
More compact & stylish



Upgraded Heating Attachment
It provides longer service life and even heating for each print.



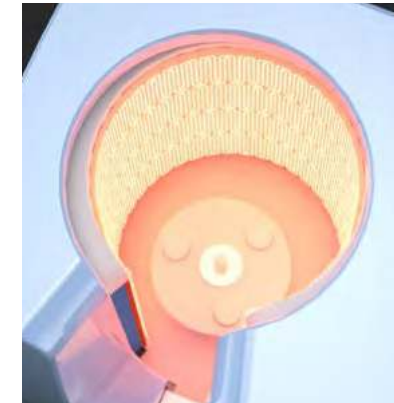
Independent Control Box
The independent design makes maintenance & setup easier.



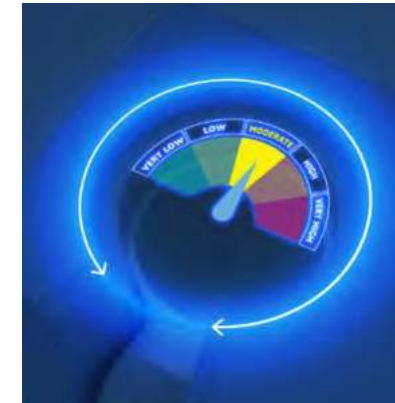
Compatible Diameter: 7.2-8.8cm
Max. Printable Length: 24cm

Item No.	CE-SMP270LB
Power	500W MAX±5%
Voltage	220V / 110V 50~60Hz
Temp. Range	32-482 °F (0-250°C)
Time Range	0-999 seconds
N.M.	6.8KG

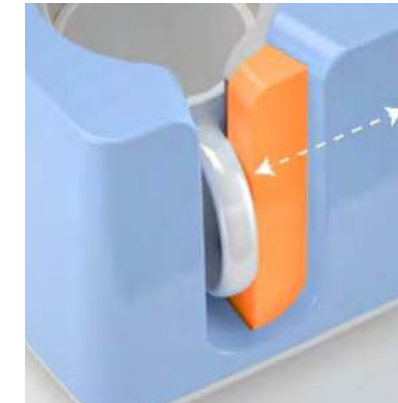
Pro Easy Auto Mug Press



High-end Material
The Tumbler Heat Press is engineered with coils that reach optimal temperatures for sublimation and distribute an even temperature and pressure to your items.



Pressure Detection Technology
Equipped with top-of-the-line pressure detection technology, the Craft Express Automatic Mug Press determines the right pressure for each blank taking the guesswork out of the process.



Look, No Hands!
The Craft Express Automatic Mug Press makes pressing easy and ensures that no blank is ever over pressed.



Take Control
Set your time and temperature on the Craft Express Automatic Mug Press with one easy button.



Item No.	CE-AUMP15
Compatible Mug Size	11oz-15oz
Rated Power	280W
Rated Voltage / Frequency	220 V / 50 Hz 110V / 60Hz
N.M.	2.6KG

Craft Express 3 in 1 Two Station Mug Press

This innovative 3 in 1 Two Station Mug Press is ready to go! One Machine, Two stations, and Three heaters are stronger than ever! With this product, we've made it possible for anyone who loves to make standard 11oz mugs, slim water bottles, glass cans, or skinny tumblers with just one machine!



Two control panels allow the users to print two mugs at once!



The two pressure handles also increase the pressure on the edge of the tumblers when you attach the long tumbler heater to this new mug press.



Upgraded Heating Attachment
It provides longer service life and even heating for each print.



Compatible Diameter	7.2-8.8cm	7.2-8.7cm	6.3-7.3cm
Max. Printable Length	24cm	10.5cm	10.5cm

Item No.	CE-DMPLB
Power	750W MAX±5%
Voltage	220V / 110V 50~60Hz
Temp. Range	32-482 °F (0-250°C)
Time Range	0-999 seconds
N.M.	10.6 KG

Dual Tumbler Heat Press



Two control panels allow the users to print two tumblers at once!



Individual Control Unit
Can operate separately



Upgraded Heating Attachment
It provides longer service life and even heating for each print.



Compatible Diameter: 7.2-8.8cm
Max. Printable Length: 24cm

Item No.	CE-DMP270
Power	1000W MAX±5%
Voltage	220V / 110V 50~60Hz
Temp. Range	32-482 °F (0-250°C)
Time Range	0-999 seconds
N.M.	11KG



Plus Eco Tumbler Heat Press

Upgraded digital control program, heating attachment, new color scheme, well assembled, user-friendly, and most importantly, it will beep when the printing is complete.



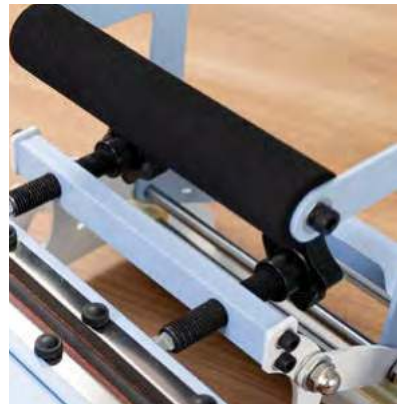
High-end Material
The Tumbler Heat Press is engineered with coils that reach optimal temperatures for sublimation and distribute an even temperature and pressure to your items.



Equipped with an Independent Control Box
that allows you to set time and temperature easily.



A Smart Reminder "Beep..."
It will beep when the printing is complete.



Pressure Handle
Fully padded with a non-slip comfort grip, the tumbler heat press gives you a comfortable experience when operating.



Item No.	CE-ECOTMP30LB
Power	698W MAX±5%
Voltage	220V / 110V 50~60Hz
Temp. Range	32-491 °F
Time Range	0-999 seconds
N.M.	11.5KG

Craft Express Cap Press



Easy to Operate

Easy to read and easy-to-use screen display allows you to effortlessly change the settings for time and temperature.



Holding Device

It allows the cap to fit the pad for good printing results.



Item No.	CE-CPLB
Power	600W / 400W MAX±5%
Voltage	220V / 110V 50~60Hz
Temp. Range	32-464 °F (0-240°C)
Time Range	0-999 seconds
N.M.	15.2KG



Craft Heat Press

The compact heat press takes up only a little desktop space but offers a large working area of 9"x12"/23cmx30cm, capable to print out an A4 size design on various fabric items and flat items.



Evenly Heating
The Heat Press features an evenly heating platen board, which is essential for ensuring consistent results when heat transfers onto your substrates.



Easy to Operate
Easy to read and easy-to-use screen display allows you to effortlessly change the settings for time and temperature.



Item No.	CE2330BL
Power	850W / 650W MAX±5%
Voltage	220V / 110V 50~60Hz
Temp. Range	32-464 °F (0-240°C)
Time Range	0-999 seconds
Printable Articles Max	230*300mm
N.M.	16.2KG



Craft Express Portable Heat Press

No matter what you are creating, there's a press for you! Available in a small, medium and large size, the Craft Express Handheld Heat Press is perfect for creators of all levels.

Craft Express Heat Press



CEHP1012-LB
10" x 12"



CEHP0708-LB
7" x 8"



CEHP0203-LB
2" x 3"

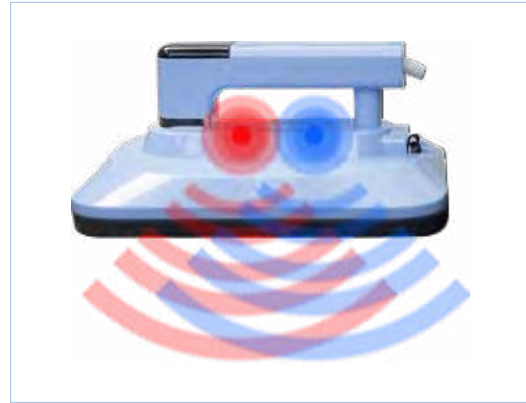
Eco Craft Express Heat Press



CEHPL0909LB
9" x 9"



CEHPL0203-LB
2" x 3"



Vibrations

It has two vibration motors that apply pressure to the item through vibration, freeing your hands

For: CEHP0708-LB & CEHP1012-LB



Peace of Mind

The soft transfer pad is designed to work alongside the Craft Express Handheld Press. Rest your press away in a specially designed heat resistant tray.



High-end Material

The Craft Express Handheld Press is engineered to achieve optimal temperatures for your projects.

Wide Application



Sublimation



HTV



Rhinestone Transfer

Which Heat Press Is Right For You?



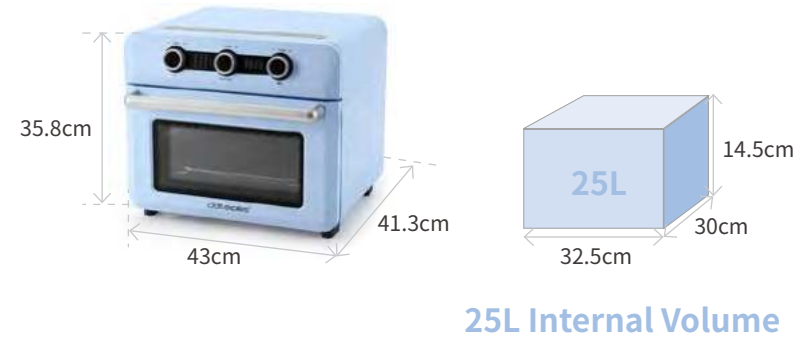
Item No.	CEHP0203-LB	CEHPL0203-LB	CEHP0708-LB	CEHPL0909LB	CEHP1012-LB
Max. Printable Area	2" x 3"	2" x 3"	7" x 8"	9" x 9"	10" x 12"
Countdown	Yes	No	Yes	Yes	Yes
Vibration	No	No	Yes	No	Yes
Visible Screen	Yes	No	Yes	Yes	Yes
Power	300W / 150W MAX±5%	250W / 180W MAX±5%	1000W / 800W MAX±5%	1200W MAX±5%	1000W / 800W MAX±5%
Voltage	220V / 120V 50~60Hz	220V / 110V 50~60Hz	220V / 110V 50~60Hz	220V / 110V 50~60Hz	220V / 110V 50~60Hz
Temp. Range	140-410 °F (60-210°C)	H 284 °F /140°C M 320 °F /160°C L 371 °F /190°C	104-392 °F (40-200°C)	185-400 °F (85-205°C)	104-392 °F (40-200°C)
Time Range	10-999 seconds	No	0-999 seconds	0-600 seconds	0-999 seconds



Sublimation Oven



12 L Internal Volume



25L Internal Volume

	CE-KX12BL	CE-KX25BL		CE-KX12BL	CE-KX25BL
Power	1600W		Heating Tube	2	4
Time Range	1-60min		Temp. Range	140-390 °F (60-200°C)	32-446 °F (0-230°C)
Voltage	220/110V 50~60Hz		N.M.	8.6KG	8.8 KG

Tools you may need when sublimating

Additional purchase required



Heat Resistant Tape



Heat Resistant Silicone Glove



Shrink Film



Extra Large Binder Clips



Silicone Wrap

Strengths of Sublimation Oven

Small, But with All You Need for Sublimation Printing.



Printing More Products at Once



Perfect Printout Result

360° unique air heat circulation & Evenly heated



Can be applied for products of more different sizes and shapes



Achieve Larger Printing Area



Auto Heat Press



Easy Control Knob
One knob for 3 uses. Whether for on/off adjustment, parameter adjustment or opening and closing the machine, this one knob solves all your operations!



Auto-Open & Close
Simply close the machine with two fingers! Or the automatic device equipped saves you from opening or closing the machine, just drop your design and leave the rest to the Auto Heat Press.



Auto Pressure Exertion
According to the thickness of your printed items, the heating platen auto-adjust and distributes even and edge-to-edge pressure automatically, reducing the guesswork and error of pressure adjustment.



Heating Platen
The advanced heated platen distributes pressure evenly, making all kinds of surfaces, fabrics and substrates perfect. The heating platen covers a 12" x 15" area for sublimation, large enough to allow you to print multiple items at once.



Item No.	CE-AUPB3038LB
Power	800W MAX±10%
Voltage	220V / 110V 50~60Hz
Temp. Range	104-401 °F (40-205°C)
Time Range	0-999 seconds
Printable Articles Max	300*380mm
N.M.	16.5KG



Combo Craft Heat Press Machine

Discover endless possibilities at Craft Express New Combo Heat Press Machine! Whether for a craft business or anyone looking to explore a new crafting hobby, this combo is an optimal option! This combo embraces 8 different heaters, which offer you a wide range of printing solutions to meet your various personalized needs for printing all kinds of flat items, hip flasks, caps, pens and a wide range of drinkware! What's more, heater replacement is easier than ever, so get ready to be impressed by "9 heat presses"!

Combo



9 x 12 in Flat Heat Press



8 / 10 in Plate Heat Press



Hip Flask Heat Press



Shin Guard Heat Press



Cap Heat Press



Pen Heat Press



Mug/Tumbler Heat Press

Configuration Combo



Heating Attachments Available



CEHBPJ-B2330
Heating Board
Size: 20*30cm



CEHBPJ-B1520
Heating Board
Size: 15*20cm



CEHBPJ-KP8
Plate Heater
Size: 8 in



CEHBPJ-KP10
Plate Heater
Size: 10 in



CEHBPJ-JB
30oz Mug/Tumbler Press
Attachment



CEHBPJ-KM
Cap Heater



CEHBPJ-KB
Pen Heater



CEHBPJ-KH
Hip Flask Heater



CEHBPJ-HD
Shin Guard Heating
Attachment

Power	1000W MAX±5%	Temp. Range	32-482 °F (0-250°C)
Voltage	220V / 110V 50~60Hz	Time Range	0-999 seconds



Brand New Touch Panel - Easier to Operate;



Slide-Out Drawer Design;



Evenly Heating;



Aviation Cable Connector Design
Safe, Durable And Easy To Replace;



Innovative Interface Design, Easier To
Replace Accessories;



Compatible with All Heaters of Craft Express
Elite Tumbler Heat Press;

Small Format Flat Heat Press

Bring this vibrant pink to your home and workshop! This compact flat heat press takes up only a little desktop space but offer a large working area of 23cm x 30cm, capable to fully print out an A4 size design on various fabric items and hard flat items. It's an easy and must-have choice for new business starters!



CE-PB2330FBL



CE-PB2330FWH



CE-PB2330FPNK

Voltage	220V / 110V
Power	800W/950W MAX±5%
Temperature	32-482 °F (0-250°C)
Time Range	0-999s
Heat platen size	23*30cm/ 9"x12"
N.M.	13KG



Clamshell Heat Press

The Heat Press can be used for a variety of flat items, perfect for printing on sublimation ornaments, tiles, slates, MDF coasters, plywood blanks, mouse pads, key chains, and apparel. With its even heating platen board, it's also a good choice for heat transfer vinyl. This is a great way to personalize t-shirts, tote bags, and more.



BPRO3838MDSCB



BPRO3838MDC



CEHPPRO3838MDPK



CEHPPRO3838MDLB

3 Configurations



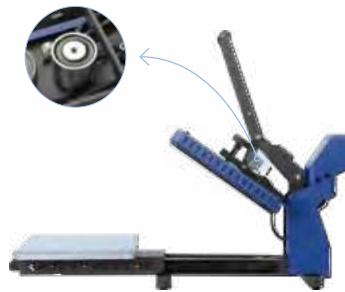
Manual

- ✗ Slide-Out Drawer
- ✗ Auto-Open



Drawer

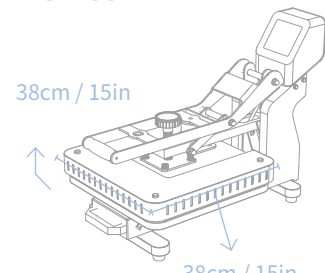
- ✓ Slide-Out Drawer
- ✗ Auto-Open



Auto-Open

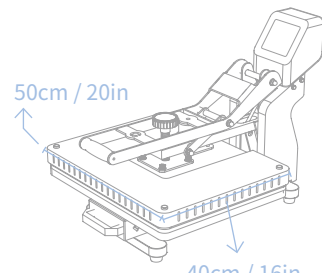
- ✓ Slide-Out Drawer
- ✓ Auto-Open

4 Sizes



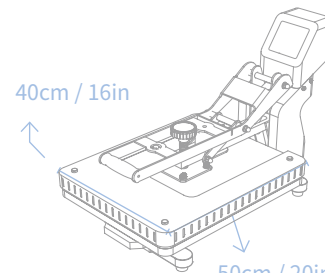
38cm / 15in

38cm / 15in



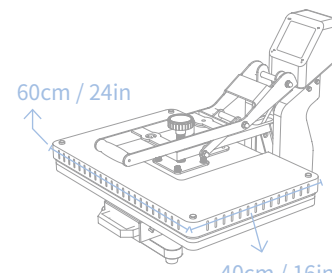
50cm / 20in

40cm / 16in



40cm / 16in

50cm / 20in



60cm / 24in

40cm / 16in



Detachable Control Box

Evenly Heating

Digital Control Meter

Slide-Out Drawer Design



Equipped with the high-quality heat shield, it could prevent burns.

Better hardware fitting and finer frame design.

Electric lifting magnet, built in auto-open device.

Pressure-adjustment Knob - according to the thickness of the material you're sublimating to.

Heat Platen	38x38cm / 15x15in		40x50cm / 16x20in		40x60cm / 16x24in		Frequency	Parameter
Voltage	220V	110V	220V	110V	220V	110V	50~60Hz	Temp. Range: 32-482 °F (0-250°C) Time Range: 0-999 seconds
Power	2000w	1300w	2200w	1600w	2400w	1800w		



Swing Away Heat Press

BestSub Swing Away Heat Press is designed to elevate your heat transfer experience. Boasting a 120° manual swing-away design enhanced with a built-in heat shield, this press prioritizes both ease and safety during operation. It comes with a detachable touchscreen panel for easy transportation and mode setting. In addition, the large heat platen offers precise temperature and delivers consistent and even heat distribution for vibrant and long-lasting transfers on a wide variety of materials, including tiles, slates, MDF coasters, plywood blanks, mouse pads, key chains, apparel and multiple ornaments. Whether you're a professional in the garment decoration business or a hobbyist looking to personalize items, this heat press offers a reliable solution for digital printing with excellent clarity and durability.



High-Quality Heat Shield



Evenly Heating



120° Swing Away Design



Detachable Control Box



Heat Platen	38x38cm / 15x15in		40x50cm / 16x20in	
Item No.	BYPRO3838SCB		BYPRO4050SCB	
Voltage	220V	110V	220V	110V
Power	2000w	1300w	2200w	1600w
Frequency	50~60Hz			
N.M.	30KG		34.8KG	
Parameter	Temp. Range:32-482 °F (0-250°C) Time Range:0-999 seconds			



DTF Printer

Direct-to-film printing, also known as DTF printing, is the revolutionary new technique that redefines fabric printing. It requires a special DTF printer, ink, powder and transfer film, which altogether can bring vivid and vibrant prints on dark or light colored polyester, cotton, nylon, canvas, leather, 50/50 blends and more. You can easily get amazing printout results that are stretchable, soft to touch and resistant to washing!

- Vivid & Vibrant
- Stretchable
- Breathable
- Soft Texture
- Wash-Resistant
- Long-Lasting

Accurately restore the image, the color output is real and clear. The image is not easily deformed and faded.



CEDTFPLB

Perfect for any dark or light colored fabric:

- Polyester
- 100% Cotton
- Nylon
- Canvas
- Leather
- 50/50 blends
- And more!

DTF Transfer Pigment Ink



500ml DTF Transfer Pigment ink

- DTF-MS500C (Cyan)
- DTF-MS500M (Magenta)
- DTF-MS500Y (Yellow)
- DTF-MS500K (Black)
- DTF-MS500W (White)



1000ml DTF Transfer Pigment ink

- CEDTF-MS1000C (Cyan)
- CEDTF-MS1000M (Magenta)
- CEDTF-MS1000Y (Yellow)
- CEDTF-MS1000K (Black)
- CEDTF-MS1000W (White)



DTF Hot Melt Powder

- DTF-RRF (1KG)

DTF Transfer Printing Film



CEDTF-FA4 (A4, per pack)



CEDTF-FA3 (A3, per pack)



CEDTF-FA3ROLL (30cmx100m)



CEDTF-FA2ROLL (60cmx100m)

Accessories



CEDTF-EPSR1390P Epson R1390 DTF Printer Head



DTFP-MSRG DTF Ink Tube



DTFP-FWXP Reset Chip for Craft Express DTF Printer



DTFP-XHB White Circulation Pump



DTFP-JBJ White Beater Motor with Cartridge



Portable Color Printer

The Portable Color Printer has a wide range of applications and can be used on a daily basis by craft enthusiasts, business people or anyone else !

Item No.	CEPTMILB
Dimensions	125 x 231 x 60 mm/4.9 x 9 x 2.3 in
Connection	Wi-Fi / USB Network
Required System	Android / IOS / Windows / Mac OS / Linux
Motion Detection	Optical Sensor
Battery Life	6 Hours
Charging Port	USB Type-C



Print On Any Materials



6 Hrs Working



Print Up to 415 A4 Pages



Color Printing



Palm-size Lightweight



One Button Printing Easy Set Up



Connection method



Connect
Connect your mobile device via Wi-Fi



Upload
Upload what you want to print

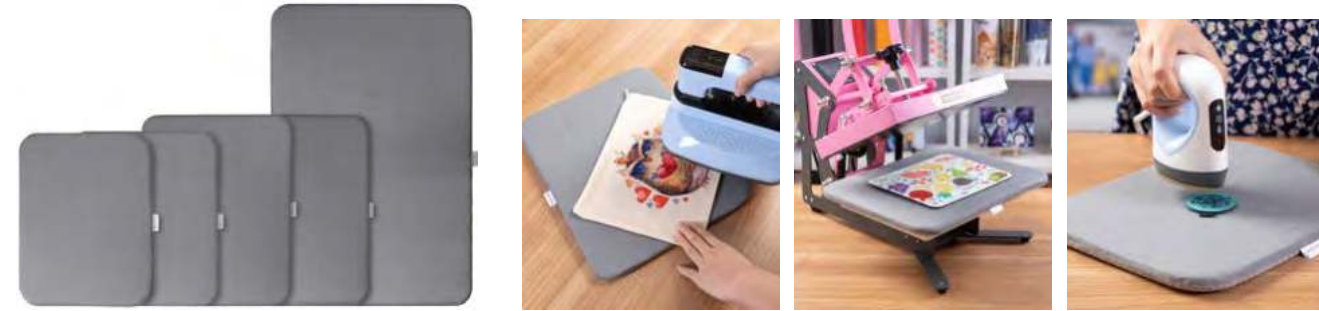


Slide
Slide to print your pattern



Heat Press Accessories

Heat Press Mat



- CE-HMD230300 Size: 23*30cm
- CE-HMD295345 Size: 29.5*34.5cm
- CE-HMD290380 Size: 29*38cm
- CE-HMD380380 Size: 38*38cm
- CE-HMD400600 Size: 40*60cm

Heat Printing Pillow



- TFD5050 50.8*50.8cm
- TFD3850 38*50cm
- TFD1744 17.5*44.5cm
- TFD4042 40.7*42cm
- TFD2829 28*29.5cm
- TFD1719 17*19cm

Conductive Silicone Wraps

A Simple Tool Helps to Print More

- GJP15-2512 1.5mm Size:25*12cm
- GJP34-2512 3.4mm Size:25*12cm
- GJP43-2512 4.3mm Size:25*12cm
- CEGJPMX-3-1 1.5mm x1, 3.4mm x1, 4.3mm x1



Heat Press Accessories

Thermal Tape Dispenser(Combo)



- JDZ02 Size: 46mm
- JDZ03 Size: 35mm



CEJD468-LB
Heat Resistant Tape
Size: 4cm*33m



CEJD268-PK
Heat Resistant Tape
Size: 2cm*33m



CEJD268-LB
Heat Resistant Tape
Size: 2cm*33m



FQ-RSM
Heater Blower Gun
Power: 2000W
Voltage: 110V / 220V
Adjustable Temp: 50-300°C / 300-500°C



CE-CWJ
Extra Large Binder Clips
Size: 14.5*13cm



CESTLB
Heart Pattern Silicone Glove
(each piece)
Size: 20*33cm



TLR3
Lint Roller

Butcher Paper For Sublimation

200 Sheets/Pack, 40 G

Item No.	size	Item No.	size
CEGLZ100240	3.9 x 9.4 in / 100 x 240 mm	CEGLZ230290	9 x 11.4 in / 230 x 290 mm
CEGLZ110250	4.3 x 9.8 in / 110 x 250 mm	CEGLZ290450	11.4 x 17.7 in / 290 x 450 mm
CEGLZ210240-N	8.7 x 9.8 in / 220 x 248 mm	CEGLZ305305	12 x 12 in / 305 x 305 mm



Shrink Film Sleeve

Shrink film wrap is the essential printing tool to use with sublimation oven and discover more DIY possibilities. Once heated, it will shrink to generate proper pressure to wrap the substrate tightly, therefore improve the ink absorption and create vivid printout results. It will never be a problem to imprint large and irregular-shaped drink ware partially or fully, and even realize seamless socks printing. Moreover, we can customize the size of shrink film to best fit your substrates and machines, to meet your requirements.

Max Heat-Resistant: 180°C /356 °F

Customize the Size You Want

Item No.	Size	Item No.	Size	Item No.	Size
RSMW70-1	135*70mm	RSMW150-4	250*150mm	RSMW195-2	230*195mm
RSMW70-2	180*70mm	RSMW150-115	300*115mm	RSMW195-3	300*195mm
RSMW80-1	90*80mm	RSMW150-5	300*150mm	RSMW230-140	460*140mm
RSMW105-1	165*105mm	RSMW165-1	230*165mm	RSMW235-1	80*235mm
RSMW125-1	110*125mm	RSMW165-2	260*165mm	RSMW235-2	150*235mm
RSMW125-2	130*125mm	RSMW175-1	120*175mm	RSMW235-300	300*235mm
RSMW125-3	160*125mm	RSMW175-2	250*175mm	RSMW235-350	350*235mm
RSMW125-4	190*125mm	RSMW175-3	300*175mm	RSMW250-300	250*300mm
RSMW125-5	250*125mm	RSMW175-185	175*185mm	RSMW330-1	330*100mm
RSMW150-1	120*150mm	RSMW180-1	100*180mm	RSMW335-1	335*150mm
RSMW150-2	180*150mm	RSMW180-2	280*180mm	RSMW335-300	335*300mm
RSMW150-3	135*150mm	RSMW195-1	150*195mm		



How to use?



1. Stick the image on substrate;



2. Wrap the substrate with a piece of protective paper;



3. Place a suitable shrink film around the substrate;



4. Heat the shrink film to make it fit tightly with the substrate;



5. Print the substrate with sublimation oven.



Silicon Wraps



KLBJ-01
1.5oz Shot Glass Wrap



KLBJ-3
3oz Shooter Glass Wrap



KLBJ-6
6oz Mug Wrap



KLBJ-11MK
11oz Mug Wrap



KLBJ-12
12oz Mug Wrap



KLBJ-17BL
17oz Glass Mug Wrap



KLBJ-17MK
17oz Ceramic Mug Wrap



KLBJ-TW
Ceramic Bowl Wrap



PJB9-N/PJB15-BL
Mug Wrap
11oz/15oz



PJS16/PJS17
1.5/3oz Shot Glass Wrap



KLBJ-3MK
3oz Mini Ceramic Mug Wrap



KLBJ-8JH
8oz Stainless Steel
Flask Wrap



KLBJ-4LH
400ml Bottle Wrap



KLBJ-6LH
600ml Bottle Wrap



KLBJ-20MK
20oz Ceramic Mug Wrap



KLBJ-0D5L/KLBJ-22PJ
0.5L/22oz
Beer Mug Wrap



KLBJ-XRB
30oz Tumbler Wrap



ZK-MFD
Silicon Vacuum Bag Unit



KLBJ-GP/KLBJ-MP
Dog/Cat Bowl Wrap



PJB20T
Size: 265*205*1.4mm
or Skinny Tumbler

Printing Parameter

No.	Item Name	Temp.(°C / °F)	Time(S)	Remark
1	11oz Ceramic Mug/Glass Mug 15oz Ceramic Mug	180°C 360 °F	120-150	1. Print on sublimation paper, mirror image; 2. Use JTrans mug press; 3. Place the mug into the mug press in proper position to avoid handle breaking; 4. Use medium pressure.
2	Water Bottle(Aluminum/Stainless Steel Material)	180°C 360 °F	35-45	1. Print on sublimation paper, mirror image; 2. Use JTrans mug press; 3. Take off the lid before printing; 4. Use low pressure.
3	Ceramic Plate	190°C 375 °F	240	1. Print on sublimation paper, mirror image; 2. Place the plate flat; 3. Use medium pressure.
4	Ceramic Tile	180-190°C 360-375 °F	150-200 300-420	1. Print on sublimation paper, mirror image; 2. Use flat heat press; 3. Print with the printable side facing the silicone mat for better result; 4. Use medium pressure.
5	Ceramic Ornament	180°C 360 °F	100	1. Print on sublimation paper, mirror image, and print two images for an ornament; 2. Fix the images to both sides of the ornament; 3. Flip over and print another 100S after printing one side; 4. Use medium pressure, to prevent the ornament from being crushed.
6	Metal Board(Aluminum/Metal Material)	200°C 360-390 °F	40	1. Print on sublimation paper, mirror image; 2. Tear off the protective film on the insert before printing; 3. Use flat heat press; 4. Use high pressure.
7	Imported Grade LA J·iCase® Aluminum Sheet	180°C 360 °F	45	1. Print on sublimation paper, mirror image; 2. Tear off the protective film on the insert before printing; 3. Print with the image facing down; 4. Use medium pressure.
8	Imported Grade A and AA J·iCase® Aluminum Sheet	180°C 360 °F	55	1. Print on sublimation paper, mirror image; 2. Tear off the protective film on the insert before printing; 3. Print with the image facing down; 4. Use medium pressure.
9	Plastic Christmas Ornament(Both -side Printable)	180°C 360 °F	50	1. Print on the sublimation paper, mirror image; 2. Print one side for the 50s; 3. Peel off the image after printing the first side, wait for cooling and print the second side for the 50s.

No.	Item Name	Temp.(°C / °F)	Time(S)	Remark
10	Imported CL Aluminum Board	190°C 375 °F	100	1. Print on the sublimation paper, mirror image; 2. Print with the image facing down; 3. Use low or medium pressure.
11	Lighter	180°C 360 °F	90-120	1. Print on sublimation paper, mirror image; 2. Both sides are sublimatable; 3. Use medium pressure, or the lighter will deform.
12	Stainless Steel Bottle Opener	180°C 360 °F	100	1. Print on sublimation paper, mirror image; 2. Fix images on both the two sides, print one size for 60 seconds, then flip it over to print the other side for 40 seconds; 3. Use medium pressure, or the bottle opener will deform.
13	Metal Name Card	180°C 360 °F	40	1. Print on sublimation paper, mirror image; 2. Printing image face down; 3. Both sides are printable, print one side then the other; 4. Cover with protective paper.
14	Sublimation Glass Frame	180°C 360 °F	120	1. Print on sublimation paper, do not mirror image; 2. Don't stick the thermal tape on the printable side; 3. Print the glass frame with printable side facing the heat platen; 4. Use medium pressure.
15	Glass Cutting Board(Tempered Glass)	180°C 360 °F	120-180	1. Print on sublimation paper, no mirror image; 2. Use flat heat press; 3. Use medium pressure.
16	Sublimation Crystal	180°C 360 °F	120-180	1. Print on sublimation paper, no mirror image; 2. Don't stick the thermal tape on the printable side; 3. Put the crystal on the worktable with the back side facing the heat platen, and preheat for 2-3 minutes; 4. Flip it over with the printable side facing the heat platen, and print for 2-3 minutes.
17	Photo Slate	180°C 360 °F	420-600	1. Print on sublimation paper, mirror image; 2. Match the image and printable side tightly without margin; 3. Printing image side down, preheat the silicone mat before printing; 4. Use medium pressure.
18	Marble Coaster	180°C 360 °F	150	1. Print on the sublimation paper, mirror image; 2. Print the coaster with image facing down; 3. Use medium pressure.
19	Shell Necklace/Earring	180°C 360 °F	60-90	1. Separate the pendant from necklace or ear hook; 2. Print on sublimation paper, mirror image; 2. Fix images on both the two sides, print one side for 60 seconds, then flip it over to print the other side for 30 seconds; 3. Connect the pendant to necklace or ear hook.

No.	Item Name	Temp.(°C / °F)	Time(S)	Remark
20	Plastic Mug	170°C 340 °F	120	1. Print on sublimation paper, mirror image; 2. Put the printing tool into the mug before printing to avoid deformation; 3. Use low pressure.
21	FRP Flat Item	190°C 375 °F	60	1. Print on sublimation paper, mirror image; 2. Peel off the protection film before printing; 3. Use low pressure.
22	Acrylic	180 360 °F	80	1. Print on sublimation paper, do not mirror image; 2. Before printing, peel off the protection film on the printed side; 3. Use low pressure; 4. After printing, peel off the protection film on the backside.
23	Sublimation Film	190°C 375 °F	60	1. Print on sublimation paper, do not mirror image; 2. Print on the frosted side.
24	Wine Bottle Adhesive Sticker	180°C 360 °F	100	1. Print on sublimation paper, do not mirror image; 2. Print on a smooth surface, and fix the image with heat-resistant tape; 3. Peel off the backing paper after printing, and stick it on the wine bottle.
25	Hardboard Items	190°C 375 °F	70-110	1. Print on sublimation paper, mirror image; 2. Tear off protection film before printing; 3. Use medium pressure.
26	Plywood	190°C 375 °F	50	1. Print on sublimation paper, mirror image; 2. Use low pressure;
27	Puzzle(Paper/Felt/Fabric/ Hardboard Material)	180°C 360 °F	120	1. Print on sublimation paper, mirror image; 2. Match image and printable side tightly without margin; 3. Use medium pressure.
28	Fridge Magnet	180°C 360 °F	120	1. Print on sublimation paper, mirror image; 2. Use flat heat press; 3. Use medium pressure.
29	T-Shirt (Light Color Cotton Material) Use ZQA4/ZQA3 light color transfer paper printing	180°C 360 °F	25	1. Printing on light color transfer paper through printer with pigment ink, mirror image; 2. Print with flat heat press in high pressure; 3. Peel off the transfer paper immediately after printing; 4. For light-color cotton T-shirts only.

No.	Item Name	Temp.(°C / °F)	Time(S)	Remark
30	T-Shirt (Dark Color Cotton Material) Use ZSA4/ZSA3 dark color transfer paper printing	180°C 360 °F	25	1. Printing on dark color transfer paper through printer with pigment ink, do not mirror image; 2. Peel off base paper before printing, stick the image on T-shirt upwards and put silicon paper above; 3. Print with flat heat press in high pressure; 4. Cold peel only; 6. For dark-color T-shirts only.
31	T-Shirt (Light Color Cotton Material) Use JETPRO Light color transfer paper printing	190°C 375 °F	18	1. Printing on light color transfer paper through printer with pigment ink, mirror image; 2. Print with flat heat press in high pressure; 3. Peel off the transfer paper immediately after printing; 4. For light-color cotton T-shirts only.
32	T-Shirt (Dark Color Cotton Material) Use G JET dark color transfer paper printing	170°C 340 °F	15	1. Printing on dark color transfer paper through printer with pigment ink, do not mirror image; 2. Peel off base paper before printing, stick the image on T-shirt upwards and put silicon paper above; 3. Print with flat heat press in high pressure; 4. Cold peel only; 6. For dark-color T-shirts only.
33	Vinyl	160°C 320 °F	10-15	1. Cut mirror image with vinyl cutter; 2. Tear or cut off leftover vinyl; 3. Lay the cut-out vinyl on T-shirt and sublimate; 4. Cold peel.
34	Poli-Tape Vinyl	160°C 320 °F	15	1. Cut mirror image with vinyl cutter; 2. Tear or cut off leftover vinyl; 3. Lay the cut-out vinyl on T-shirt and sublimate; 4. Cold or hot peel.
35	Poli-Tape Subli-Print Vinyl	190°C 375 °F	30	1. Print image on vinyl; 2. Cut out image with vinyl cutter; 3. Lay the cut-out vinyl on T-shirt and sublimate; 4. Cold or hot peel.
36	Subli-Cotton Fabric	190°C 375 °F	60	1. Print on the sublimation paper, mirror image; 2. The image should be larger than an A4 paper. Put the fabric on a T-shirt with the rough side facing down, put the image on the fabric, put a silicon paper above, and start printing; 3. Peel off the transfer paper carefully after printing.
37	Metallic Film	180°C 360 °F	10	1. Print on the sublimation paper, mirror image; 2. The image should be larger than the metallic film. Press the film onto the T-shirt for 10s in 180°C , and peel off after cooling down; 3. Press the image on the T-shirt for 25s in 190°C , and peel off immediately or after cooling down.
38	Sequin Adhesive	180°C 360 °F	120	1. Print on the sublimation paper, mirror image; 2. Flip the sequins with white side facing up, and peel off the back film; 3. Place the adhesive on the t-shirt, cover it with image, and print; 4. Flip the sequins immediately after printing.

No.	Item Name	Temp.(°C / °F)	Time(S)	Remark
39	Faux Rhinestone Transfer Sheet(For Cloth)	160°C 320 °F	15	1. Use high pressure, preheat to 160°C and begin to print; 2. When the time is up, take out the cloth. Peel off the transfer sheet immediately or after cooling down. The faux rhinestone pattern can be customized
40	Faux Rhinestone Transfer Sheet(For Ceramic Mug)	140°C 285 °F	30	1. Use high pressure, preheat to 140°C and begin to print; 2. When the time is up, take out the mug. Peel off the transfer sheet after cooling down. The faux rhinestone pattern can be customized
41	Faux Rhinestone Transfer Sheet(For Metal Mug)	110°C 230 °F	30	1. Use high pressure, preheat to 110°C and begin to print; 2. When the time is up, take out the mug. Peel off the transfer sheet after cooling down. The faux rhinestone pattern can be customized
42	T-Shirt/Textile (100% Polyester Material Light-colored fabric)	190°C 375 °F	60	1. Print on sublimation paper, mirror image; 2. Use flat heat press; 3. Use high pressure; 4. Only for non cotton material, polyester mostly.
43	Neoprene	180°C 360 °F	120	1. Print on sublimation paper, mirror image; 2. Do not apply too much pressure when printing to avoid deforming.
44	Wallet Case	180°C 360 °F	120	1. Print on sublimation paper, mirror image; 2. Don't press on leather; 3. Use high pressure.
45	Cap	220°C 430 °F	60	1. Print on sublimation paper, mirror image; 2. Use cap press or 8-in-1 heat press, print in low pressure; 3. Press the green button, and press down immediately.
46	Leathaire Pillow cover	190°C 375 °F	60	1. Print on sublimation paper, mirror image; 2. Cover a silicon paper on the sublimation paper to avoid paper sticking to the heat platen; 3. Be careful not to press on the zipper; 4. Use medium or low pressure.
47	Glitter/Gradient Color Pillow Cover	180°C 360 °F	60	1. Print on sublimation paper, mirror image; 2. Put a piece of protective paper under the pillow cover; 3. Print one side first then the other.
48	PU Keychain	180-190°C 360-375 °F	40-50	1. Print on the sublimation paper, mirror image; 2. Take off the metal ring before printing.
49	Ping-Pong Racket	180-190°C 360-375 °F	40-50	1. Print on the sublimation paper, mirror image; 2. Print two racket simultaneously. Put one racket each on the left and right sides of worktable to ensure balance and even heating.

No.	Item Name	Temp.(°C / °F)	Time(S)	Remark
50	Plastic Domino	180°C 360 °F	200	1. Print two mirror images on sublimation papers; 2. Tape the images on both the two sides; 3. Press one side for 100 seconds, flip it over, and press the other side for another 100 seconds;
51	Pen	145°C 290 °F	120	1. Print mirror image on laser paper using laser printer; 2. Put the pen on the pen heater, adjust the pressure to low pressure; 3. Heat the pen in 145°C ; 4. Wait until the pen gets cold, peel off the paper.
52	Shin Guard	200°C 392 °F	270	1. Print on the sublimation paper, mirror image; 2. Tape the image on the shin guard with heat-resistant tape; 3. Use large pressure, When the machine reaches 200 °C , put it in and start printing directly on the countdown; 4. Apply the pad to the shin guard after printing.
53	Digital Mug Bottom Heat Press for ceramic mug bottom	220°C 430 °F	400	1. Print on the sublimation paper, mirror image; 2. Tape the image on the bottom of the mug; 3. Press the green button to start printing when the temperature drops; 4. peel off the image at the end of printing.

- The above mentioned time & temperature parameters are just for equipment made by our factories. It may be different from other factories;
- The temperature is "Fahrenheit";
- Above listed parameters are only for suggestions from our own experience. You can also try and find out the best from your own operation.

Note:

- Do not heat the machine without mug in the heaters or it could burn out; Do not touch the heating elements directly without any protection, or you could be hurt; After running more than 1.5 hours, it is better to turn off the machine for a 20-minute-break.
- Trouble-shootings on a regular period basis.

FAQS:

- The color is a bit light: the temperature is too low, or the pressure is unbalanced, or the time is too short;
- The picture is vague: the pressing time is too long causing the ink to spread;
- The cover of the print is not brilliant: the pressure is too heavy;
- The print is partially vague: the heat of pressed area is unbalanced;
- The print has scar: the pressing time is too long;
- The print is in different level color: The pressure is unbalanced or the cover printing material is not balanced;
- Sticking papers: the temperature is too high or the cover of printing material is not so good.

Portable Heat Press Printing Parameter

FUNCTION	1	The machine comes with two motors, one is for working while the other is a spare motor. Both the motors work in the same three vibration modes, and “1-1” ,1-2” , and “1-3” on the screen indicate each vibration frequency of motor 1, while “2-1” ,2-2” , and “2-3” are for motor 2.
	2	The frequency of 1-3 or 2-3 is perfect for printing flat items.
	3	More mug heaters in different sizes are coming soon. Once the mug heater is attached to the machine, it will heat up instead of the flat heat platen.
	4	Long press on power button for 3 seconds to turn on or turn off the machine.
	5	Press power button to start or stop counting down, or stop the machine from beeping after printing.
	6	Press "+" and "-" buttons in countdown mode to set the vibration frequency.
	7	Press "Set", "+", and "-" buttons to adjust temperature and time.
	8	Press "+" and "-" simultaneously to switch between °C and °F .

No.	Item	Temp.	Time	Vibration Frequency	Note
1	Polyester Clothes	200°C	60S	1-3 or 2-3	1. Print on sublimation paper, mirror the image; 2. Make sure that buttons and zippers don't touch the heat platen; 3. Fix the image with thermal tape.
2	Ceramic Coaster	180°C	150S	1-3 or 2-3	1. Print on sublimation paper, mirror the image; 2. Fix the image with thermal tape.
3	Hardboard Coaster	180°C	120S	1-3 or 2-3	1. Print on sublimation paper, mirror the image; 2. Peel off the top film; 3. Fix the image with thermal tape.
4	Phone Cover Alu Insert	180°C	80S	1-3 or 2-3	1. Print on sublimation paper, mirror the image; 2. Peel off the top film; 3. Fix the image with thermal tape.
5	11oz Ceramic Mug	180°C	260S	1-0 or 2-0 (No Vibration)	1. Print on sublimation paper, mirror the image; 2. Fix the image with thermal tape; 3. Use mug heater; 4. After printing, press power button then take out the mug.
6	Sequin Adhesive	180°C	120S	1-0 or 2-0 (No Vibration)	1. Print on the sublimation paper, mirror image; 2. Flip the sequins with white side facing up, and peel off the back film; 3. Place the adhesive on the t-shirt, cover it with image, fix the image with thermal tape, and print; 4. Flip the sequins immediately after printing.

Elite Tumbler Heat Press Printing Parameters

Item Name	Temp.(°C / °F)	Time(S)
11oz Ceramic Mug	180°C / 360 °F	280
<p>1. Print on sublimation paper, mirror image; 2. Tape the image on the mug with heat-resistant tape and put the mug into the heat press to adjust pressure; 3. Take out the mug, and let the machine preheat to 180°C . You can put two unused mugs into the heater while it’ s preheating to extend its life; 4. As the machine heats up to 180°C , take out the unused mugs, and put the printed mugs inside; 5. Take out the mug when the time is up; 6. Peel off the image.</p> <p>Tip: Please put the two mugs into the heater with bottom to bottom, no gap in between, to avoid an uneven heater after multiple uses.</p>		
Glass Mug	180°C / 360 °F	280
<p>1. Print on sublimation paper, mirror image; 2. Tape the image on the mug with heat-resistant tape and put the mug into the heat press to adjust pressure; 3. Take out the mug, and let the machine preheat to 180°C . You can put two unused mugs into the heater while it’ s preheating to extend its life; 4. As the machine heats up to 180°C , take out the unused mugs, and put the printed mugs inside; 5. Take out the mug when the time is up; 6. Peel off the image.</p> <p>Tip: Please put the two mugs into the heater with bottom to bottom, no gap in between, to avoid an uneven heater after multiple uses.</p>		
Borosilicate Glass Mug	180°C / 360 °F	Partial image: 120-150s Full image: 90-150s and 40-130s for second time
<p>1. Print on sublimation paper, mirror image; 2. Tape the image on the mug with heat-resistant tape and put the mug into the heat press to adjust pressure; 3. Take out the mug, and let the machine preheat to 180°C . You can put an unused mug into the heater while it’ s preheating to extend its life; 4. As the machine heats up to 180°C , take out the unused mug, and put the printed mugs inside. If you want to print a partial image in the middle of the bottle, one press for 120-150 seconds is enough; 5. If you want to print a full image around the bottle, press for 90-150 seconds, rotate it 180 degrees, and press it again for 40-130 seconds; 6. Peel off the image.</p> <p>Tip: 1. Take off the lid before printing; 2. Wear heat-resistant gloves to avoid burns; 3. Adjust the printing time according to the size of the mug; 4. Please put the two mugs into the heater with bottom to bottom, no gap in between, to avoid an uneven heater after multiple uses.</p>		

Item Name	Temp.(°C / °F)	Time(S)
11oz Plastic Mugs	180°C / 360 °F	280
<p>1. Print on sublimation paper, mirror image; 2. Insert the printing tools into the mugs, put the mugs into the heater, and adjust the printing pressure; 3. Take out the mugs, and let the machine preheat to 180°C . You can put two unused mugs into the heater while it's preheating to extend its life; 4. As the machine heats up to 180°C , take out the unused mugs, and put the printed mugs inside; 5. Take out the mugs and remove the printing tools. If the mugs are a bit deformed, press slightly to shape them with your hands while they're still hot; 6. Peel off the image;</p> <p>Tip: Please put the two mugs into the heater with bottom to bottom, no gap in between, to avoid an uneven heater after multiple uses.</p>		
Metal Bottle	180°C / 360 °F	First press for 60-80s Second press for 30-40s
<p>1. Print on sublimation paper, mirror image; 2. Tape the image on the bottle, put the bottle into the heater, and adjust the printing pressure; 3. Take out the bottle, and let the machine preheat to 180°C . You can put one unused bottle into the heater while it's preheating to extend its life. ; 4. As the machine heats up to 180°C , take out the unused bottle, put the printed bottle inside and press it for 60-80 seconds; 5. If you want to print a full image around the bottle, rotate it 180 degrees, and press it again for 30-40 seconds; 6. If you want to print a partial image in the middle of the bottle, one press for 60-80 seconds is enough; 7. Peel off the image,</p> <p>Tip: 1. Take off the bottle lid before printing; 2. Wear heat-resistant gloves to avoid burns; 3. Adjust printing time according to the bottle size.</p>		
Enamel Mug	180°C / 360 °F	280
<p>1. Print on sublimation paper, mirror image; 2. Tape the image on the mug, put two enamel mugs into the heater bottom to bottom, and adjust the printing pressure; 3. Take out the mugs, and let the machine preheat to 180°C . You can put one unused mug into the heater while it’ s preheating to extend its life. ; 4. As the machine heats up to 180°C , take out the unused mug, and put the printed mug inside. The rim part of the mug is exposed on the outside of the heater and place a same size enamel mug against the bottom of the printed mug to ensure even pressure; 5. Take out the mug when the time is up; 6. Peel off the image.</p> <p>Tip: 7. Needs to be printed with a short heater, because the mugs in long heaters cannot be placed against each other to ensure even pressure.</p>		

FAQ

ORDERING

We have 45+ local agents and distributors in many countries around the world, you can email us the products you are interested in, the quantity and your address at info@craftheatpress.com and we will match you with the nearest distributor or agent according to your location so that you can receive the products quickly.

For mass production and customization, email us at info@craftheatpress.com directly and we will place your order according to the requirements.

SHIPPING

Shipping Method & Time

We can ship your order by express, air or sea depending on the urgency of the order. It takes about 1 month from China to Western Europe and North America, and about 15 days to Southeast Asia. The shipping can be arranged from Guangzhou, Shenzhen, Shanghai, Ningbo or Qingdao.

If you have your own account # or shipping agent, please provide it directly, and we can contact them to pick up your order.

CUSTOM EQUIPMENT

In order to meet the market's demand and elevate your business to a new level. We're happy to provide innovative printing solutions for you to customize your own equipment. Our OEM/ODM service covers a wide range of equipment, contact our sales team for more details: info@craftheatpress.com

HOW CAN I APPLY FOR BECOMING A REGIONAL AGENT?

We feel greatly honored to build up partnership relations with any potential individuals, organizations and corporations on the basis of honesty, mutual trust and benefit, and great services to our clients. On the condition that you agree with the above principles, please contact us immediately for detailed negotiation. Before signing the sole regional distributor contract, we would ask the candidate to demonstrate the capability of developing the market as the fulfillment of mutual trust.

WARRANTY

All Heat Presses from us are warranted for one year from the date of purchase. Heating elements that come with the heat press are warranted for six months. If you experience difficulty during the installation or subsequent use of the craft heat press, we also offer lifetime technical support to our customers worldwide.

PRODUCT

Which Heat Press Is Right For Me?

Mug/Tumbler Heat Press, Garment Heat Press or Sublimation Oven?

For different types of heat presses, first, you need to categorize them according to the needs, for mugs/tumblers you'd better choose mug/tumbler heat press, for flat items you need to choose garment heat press. Subsequently, you need to choose the specific heat press according to the products you often print. For example, if you often print 11oz ceramic mugs, we would recommend our new Craft Hobby Mug Press. For more details, feel free to contact our sale team at info@craftheatpress.com

Below is a short description of our different types of heat presses.

Mug/Tumbler Heat Presses are designed for printing mugs & tumblers of different sizes. We have developed many models, they have adjustments and changes in the shape, color scheme, machine structure, digital control box and so on. All heat presses have a wide selection in their heating attachments, so you can discover more possibilities in one heat press.

Garment Heat Presses are perfect for all sublimatable flat items, t-shirts, socks, photo panels, ornaments, shopping bags, blankets & more! We also have a number of different garment heat presses, and the most distinguishing difference is the size of their plate board. If you like to do crafts, then you can go for a smaller size, or if you're going to start a garment customization business, you can go for one that is more in line with the size of the clothes.

Sublimation Ovens are great for all sorts of irregularly shaped mugs, tumblers & pet bowls that can't be sublimated by mug & tumbler heat press. Not only can it print multiple items at once, but there is no size limit from 1.5oz to 64oz! No need to adjust the pressure, just adjust the right parameters and place the items to be printed together in the oven, very efficient.