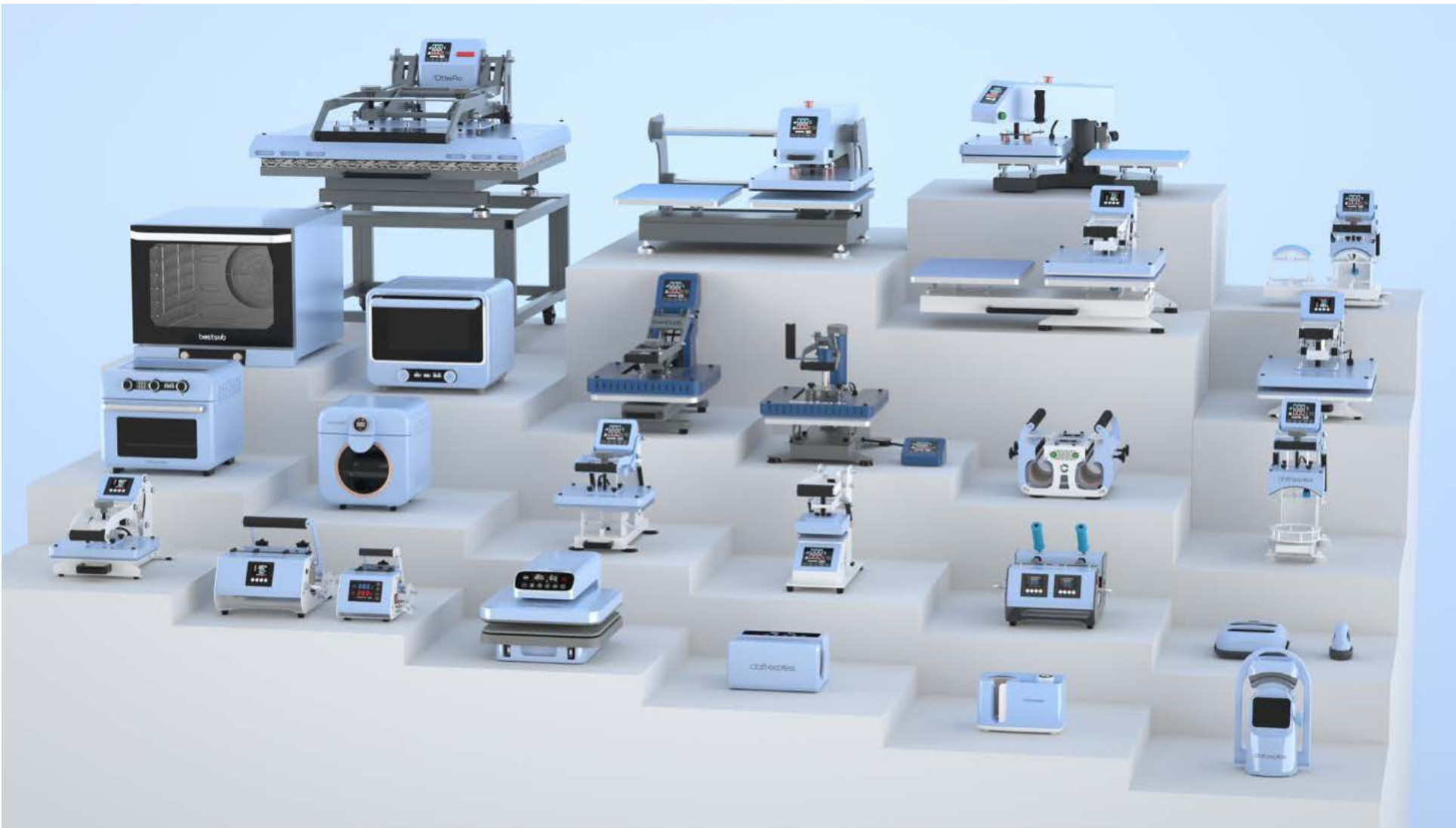


craft express®

www.craftheatpress.com

Innovative Heat Press Solutions

Craft Heat Presses, Printers, Tools & Accessories





Heat Press Factory

The CraftHeatPress factory is located in Dongguan city, Guangdong Province. After years of development, we have gained professional experience in the production of heat presses, a powerful production team and a complete quality control process, and our current monthly output has reached 6,000 units. Plus, our development, sampling, testing, production and logistics have corresponding quality control processes to ensure every machine delivered to our customers is reliable.



Premium Accessories



Precision Cut Forging



Production Test



Printing Test



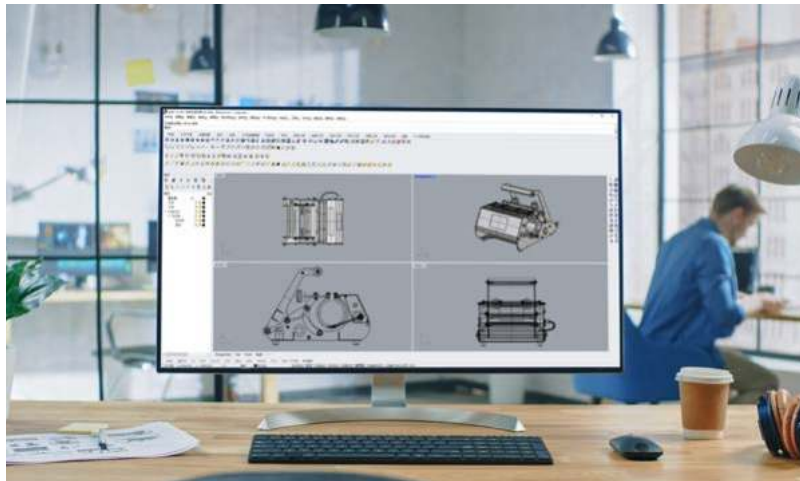
Anti-drop Test



Random Inspection
Before Shipping

Professional Design & Development Team

We have a professional design and development team for heat presses, always sensitive to the market and attentive to user needs, to develop the most simple to use, durable and reliable heat presses. Each piece of heat press is developed from our customers' aesthetic and usage needs so that your creativity is not constrained.



We are always researching for the best equipment structure, the most reasonable cost, and the best user experience, and we value every customer feedback and continuous improvement.



OEM & ODM

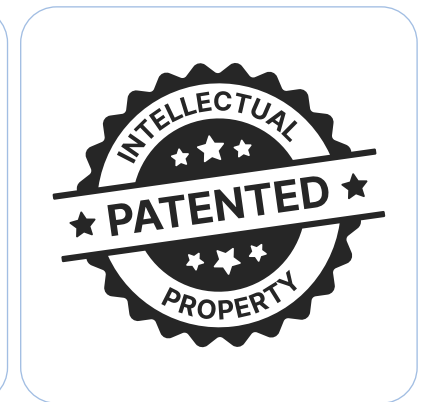
As a professional manufacturer of craft heat presses, we offer OEM (Original Equipment Manufacturer) and ODM (Original Design Manufacturer) services to our customers, retaining the maximum creativity of the customers for the heat presses, as well as providing the existing heat press designs for customers to customize their logos.

Technical Approvals & Certifications

With two decades of developing, researching and manufacturing, our heat presses stand out for their exceptional, reliable performance and up-to-date printing solutions.

We're committed to creating more user-friendly and patent-protected craft heat presses with a creative appearance & compact design to ensure our customer's benefit and help them advance their business. The heat presses are rigorously tested and widely recognized by global certifications, ETL, CE & RoHS compliant with LVD and EMC certification.

These patented innovations represent our dedication to ongoing improvement and development of advanced solutions in the heat press industry. With a blend of certified safety, patented advancements, and excellent performance, our heat presses offer an unparalleled combination of quality, reliability, and innovation.





How to Choose Heat Press?



Tumbler Heat Presses

Compact mug press, efficient two-station tumbler heat press or beginner-friendly tumbler press, explore diverse printing solutions for your mugs & tumblers customization.



Sublimation Ovens

Highly efficient printing solutions for a wide variety of extra-large, small or irregularly shaped drinkware, from 1.5oz to 64oz, solve all kinds of your printing challenges!



Craft Heat Presses

From mini easy press to small format craft heat press, a wide range of compact and affordable heat presses offer a full range of printing solutions for hats, bags, pillowcases, tiles, slates, ornaments and more sublimation flat items to start your DIY craft business.



Garment Heat Presses

Wider printing range for more efficient batch making. Swing-away and clamshell designs can meet your different operating experiences on printing T-shirts, photo panels and garments.



Specialty Heat Presses

In addition to our regular machines, we've launched specialized models for a range of common products like hip flasks, plates, pens, caps, inflatable balls, shin guards, and more.



craft express

Isabella & Marcia

FATHER'S DAY
you forever

Ferdinand

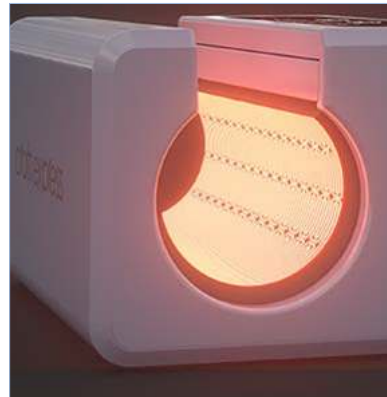
don't
WORRY
beer
HAPPY

Autopress Max Drinkware Edition



Safety is Top Priority

With emergency stop and auto shut-off features, you can complete your craft projects safely and with peace of mind.



High-end Material

Upgraded heating attachment ensures optimal temperature and pressure distribution to substrates for vibrant and stunning results.



Ultra-large Touch-screen Design

Designed with a large touch-screen design for precise temperature control and enjoy a superb experience every time.



Auto Pressure Exertion



Item No.	CE-AUMP30LB
Power	550W
Voltage	120 V / 230V 50-60 Hz
Temp. Range	40-205°C (104-401 °F)
Time Range	1-999s



Fast Heating



Auto Feature



Easy to Use



Touch-screen Design



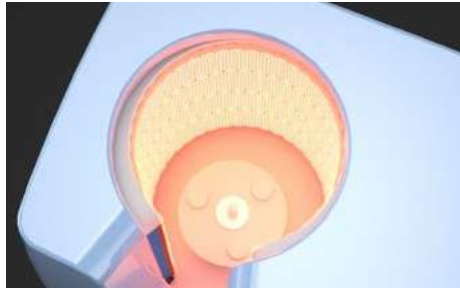
Safe Operation



Compact & Lightweight



craft express®



High-end Material

The Tumbler Heat Press is engineered with coils that reach optimal temperatures for sublimation and distribute an even temperature and pressure to your items.



Pressure Detection Technology

Equipped with top-of-the-line pressure detection technology, the Craft Express Automatic Mug Press determines the right pressure for each blank taking the guesswork out of the process.



Look, No Hands!

The Craft Express Automatic Mug Press makes pressing easy and ensures that no blank is ever over pressed.

Pro Easy Auto Mug Press



CE-AUMP15BL



CE-AUMP15NBL



Take Control

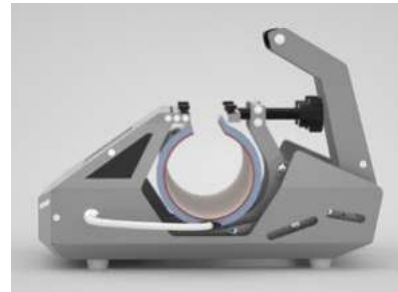
Set your time and temperature on the Craft Express Automatic Mug Press with one easy button.



One-touch Knob for Everything

Item No.	CE-AUMP15BL	CE-AUMP15NBL
Compatible Mug Size	11oz-15oz	
Rated Power	280W	
Rated Voltage / Frequency	220 V / 50 Hz, 110V / 60Hz	
N.W.	2.6KG	

Car-Stylish Mug Press



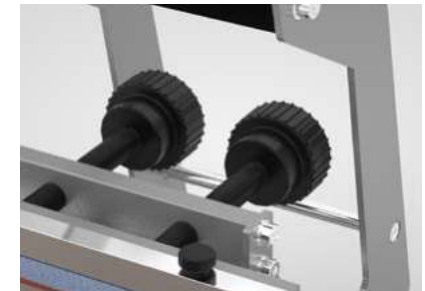
Unique Car-Shaped Design



User-friendly Touch-screen

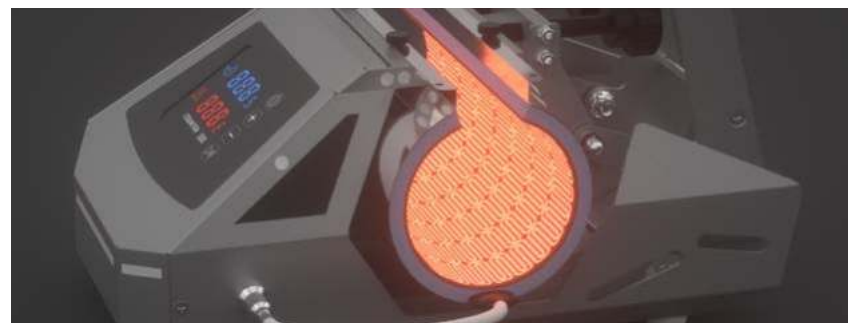


for All Our Heating Attachments



Even Pressure with Dual Pressure Knobs

Item No.	CE-CTMPSV
Power	540W
Voltage	220V/110V 50~60Hz
Temp. Range	0-250°C (32-482 °F)
Time Range	1-999 seconds



Premium Heating Element

Manual Mini Mug Press



One-touch Knob for Everything



Compact & Space-saving



User-friendly Pressure Knob



Premium Heating Element

Item No.	CE-MMPLB
Power	300W
Voltage	220V/110V 50~60Hz
Temp. Range	0-250°C (32-482 °F)
Time Range	1-999 seconds



Elite Tumbler Heat Press



CE-MP270PLB
Light Blue



CE-MP270PPK
Pink



CE-MP270PWH
White



CE-MP280H2IN1LBW-3040
Light Blue

Two Options

Pro



Pro Max



Power	500W-750W MAX±5%	Time Range	0-999 seconds
Voltage	220V / 110V 50~60Hz	N.W.	8.6KG
Temp. Range	0-250°C (0-482 °F)		

Elite Tumbler Press Heating Attachments Available



MP270P-BD30
Compatible Diameter: 7.2-8.8cm
Max. Printable Length: 24cm
Power: 540W



MP270P-BD20S
Compatible Diameter: 6-7.1cm
Max. Printable Length: 24cm
Power: 500W



MP270P-BD20
Compatible Diameter: 7-8cm
Max. Printable Length: 20.3cm
Power: 500W



MP270P-BD17V / Conic
Upper Diameter: 5.5-6.4cm
Lower Diameter: 8-8.8cm
Max. Printable Length: 15cm
Power: 350W



MP270P-BD30T
For 30oz Travel Mug
Power: 300W



MP270P-BD12V / Conic
Upper Diameter: 6-7cm
Lower Diameter: 8.8-10cm
Max. Printable Length: 10cm
Power: 300W



MP270P-BD11
Compatible Diameter: 7.2-8.7cm
Max. Printable Length: 9.5cm
Power: 303W



MP270P-BD10
Compatible Diameter: 6.5-8.1cm
Max. Printable Length: 9.5cm
Power: 248W



MP270P-BD12E / Wine Glass
For 12oz Wine Tumbler Heater
Power: 250W



MP270P-BD3V / Conic
For 3oz Shot Mug
Power: 118W



MP270P-BD3
Compatible Diameter: 4.8-5.8cm
Max. Printable Length: 6.2cm
Power: 142W



MP270P-BD15V / Conic
Upper Diameter: 3.5-4.2cm
Lower Diameter: 4.9-5.6cm
Max. Printable Length: 6.2cm
Power: 151W



Pro Max Exclusive Heater

MP280-BD32
 Compatible Diameter: 8.8-10.2cm
 Max. Printable Length: 25cm
 Power: 750W



Pro Max Exclusive Heater

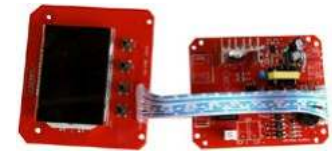
MP40BDS
 Compatible Diameter: 9.5-10.2cm
 Max. Printable Length: 14cm
 Power: 400w



BD40N-ZX
 For 40oz Tumbler
 For Conic Part Printing
 Power:



MP270P-BD9
 Compatible Diameter: 6.7-7.3cm
 Max. Printable Length: 10.5cm
 Power: 248W



CE-MP270H-ZB
 Main Board for CE-MP270H

All In One Combo Tumbler Mug Heat Press Collection

Item No.	Combo	Heating Attachments
CE-MP280H-11IN1 <i>(Pro max only)</i>	11 in 1	MP280-BD32, MP270P-BD30, MP270P-BD20S, MP270P-BD20, MP270P-BD17V, MP270P-BD12V, MP270P-BD11, MP270P-BD12E , MP270P-BD15V , MP270P-BD3, MP270P-BD10
CE-MP270P-10IN1	10 in 1	MP270P-BD30, MP270P-BD20S, MP270P-BD20, MP270P-BD17V, MP270P-BD12V, MP270P-BD11, MP270P-BD12E , MP270P-BD15V , MP270P-BD3, MP270P-BD10
CE-MP270P-4IN1	4 in 1	MP270P-BD30, MP270P-BD11, MP270P-BD10, MP270P-BD12E
CE-MP280H-3IN1 <i>(Pro max only)</i>	3 in 1	MP280-BD32, MP270P-BD30, MP270P-BD12E
CE-MP280H-2IN1	2 in 1	MP270P-BD30, MP270P-BD20S
CE-MP280H2IN1LBW-3040	2 in 1	MP280-BD32, MP270P-BD30



Friends Forever

Monica, Isabella, Marcia



Love you
MOMMY



You're the best



WORLD'S BEST DOG DAD

LOVE BRADY

60s
356°F
COUNTER 0:18

HAPPY MOMMY
Mommy

Best Dog Mom Ever

EXPLORE

EVERY DAY IS
A NEW
ADVENTURE

Craft Hobby Mug Press



Save on Heating Attachments

Compatible with heating attachments of previous elite tumbler heat presses.



Ideal Gift Idea

The stylish and portable design makes it a great holiday gift for friend and family.



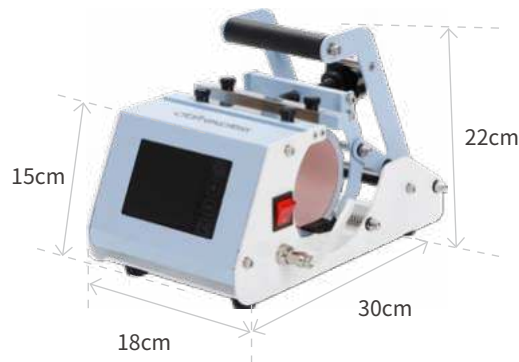
Upgraded Heating Attachment

It provides longer service life and even heating for each print.



Touch Screen Panel

The digital control meter features a large and touchscreen design, the mode setting is very easy to set up and operate even for beginners.



MP270P-BD11

Compatible Diameter:

2.83-3.42in/7.2-8.7cm

Max. Printable Length:

3.74in/9.5cm

Support Full & Partial Printing

11-15oz and More sublimation straight mugs

Item No.	CE-MP11TSLB
Power	300W MAX±5%
Voltage	220V / 110V 50~60Hz
Temp. Range	0-250°C (32-482 °F)
Time Range	0-999 seconds
N.W.	5KG

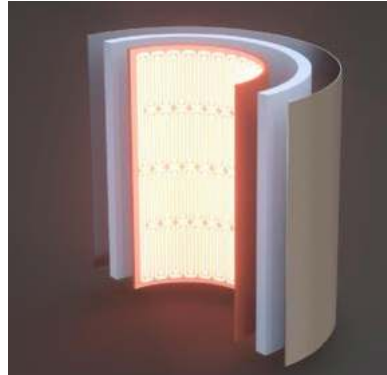


Craft Hobby PLUS Mug Press



Dual Screw Knobs

Featuring two pressure screw knobs make it perfect for accommodating longer heating attachments and resulting in even heat distribution.



Upgraded Heating Attachment

It provides longer service life and even heating, getting stunning effects for every print.



Easy to Replace

Simply remove the heating attachment and secure the required one, the replacement is complete!



Every Fun Moment

Create an extraordinary immersive experience and enjoy fabulous artwork at all times!



MP40BDS

Compatible Diameter:
9.5-10.2cm
Max. Printable Length:
14cm

Item No.	CE-MP40TSLB
Power	400W MAX±5%
Voltage	220V / 110V 50~60Hz
Temp. Range	0-250°C (32-482 °F)
Time Range	0-999 seconds
N.W.	5.9KG



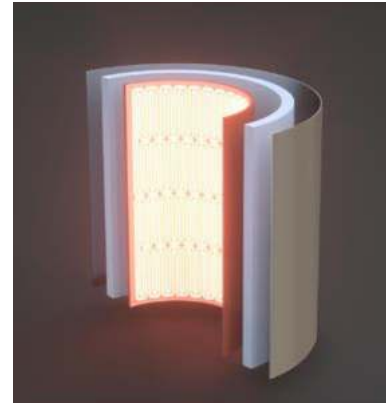
Craft Hobby Pro Tumbler Heat Press



Save on Heating Attachments
Compatible with heating attachments of previous elite tumbler heat presses.



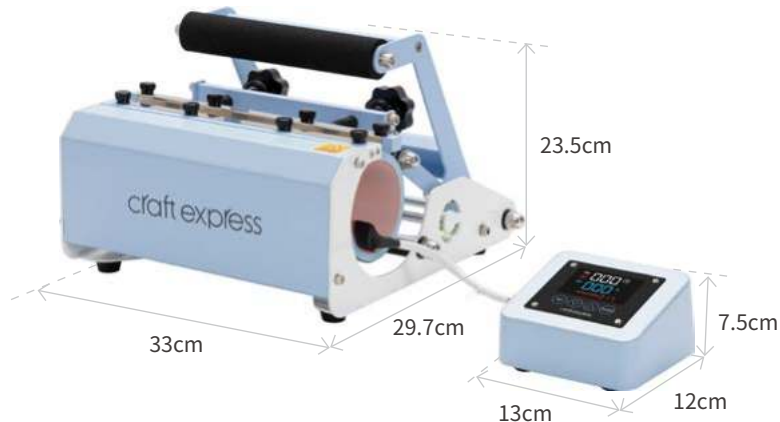
New Exterior Design
More compact & stylish



Upgraded Heating Attachment
It provides longer service life and even heating for each print.



Independent Control Box
The independent design makes maintenance & setup easier.



MP270P-BD30
Compatible Diameter: 7.2-8.8cm
Max. Printable Length: 24cm

Item No.	CE-SMP270LB
Power	500W MAX±5%
Voltage	220V / 110V 50~60Hz
Temp. Range	0-250°C (0-482 °F)
Time Range	0-999 seconds
N.W.	6.8KG



Craft Express 3 in 1 Two Station Mug Press

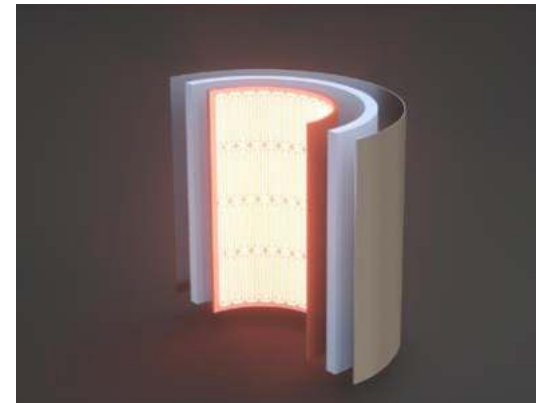
This innovative 3 in 1 Two Station Mug Press is ready to go! One Machine, Two stations, and Three heaters are stronger than ever! With this product, we've made it possible for anyone who loves to make standard 11oz mugs, slim water bottles, glass cans, or skinny tumblers with just one machine!



Two control panels allow the users to print two mugs at once!



The two pressure handles also increase the pressure on the edge of the tumblers when you attach the long tumbler heater to this new mug press.



Upgraded Heating Attachment

It provides longer service life and even heating for each print.



MP270P-BD30 MP270P-BD11 MP270P-BD9

Compatible Diameter	7.2-8.8cm	7.2-8.7cm	6.3-7.3cm
Max. Printable Length	24cm	10.5cm	10.5cm

Item No.	CE-DMPLB
Power	750W MAX±5%
Voltage	220V / 110V 50~60Hz
Temp. Range	0-250°C (0-482 °F)
Time Range	0-999 seconds
N.W.	10.6 KG



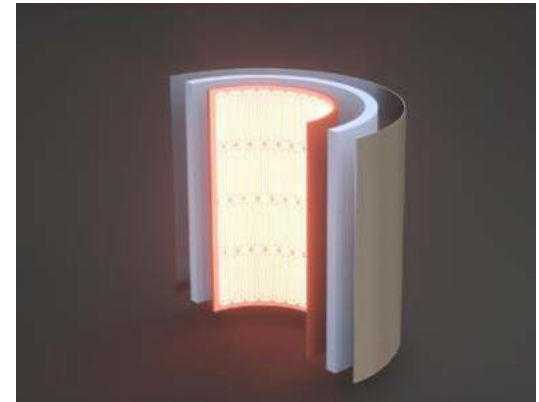
40oz Tumbler Press



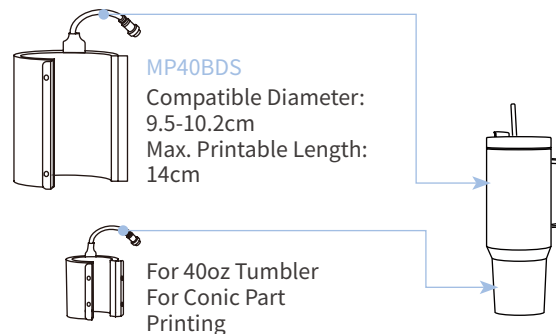
Two control panels allow the users to print two mugs at once!



Comes with two heating attachments that perfectly match the dimensions of the upper and bottom of the 40oz tumbler.



Upgraded Heating Attachment
It provides longer service life and even heating for each print.



Item No.	CE-DMP40LB
Power	600W MAX±5%
Voltage	220V / 110V 50~60Hz
Temp. Range	0-250°C (0-482 °F)
Time Range	0-999 seconds
N.W.	9.2 KG



craft express

CALIFORNIA
EAST SIDE
82
LOS ANGELES
GOLD COAST
AUTHENTIC SPIRIT

24 HOURS
24 HOURS
24 HOURS

don't
Worry
be
Happy

Long Beach
California

BIG WAVE!
SURF PARADISE
ENJOY THE WAVE FIRST

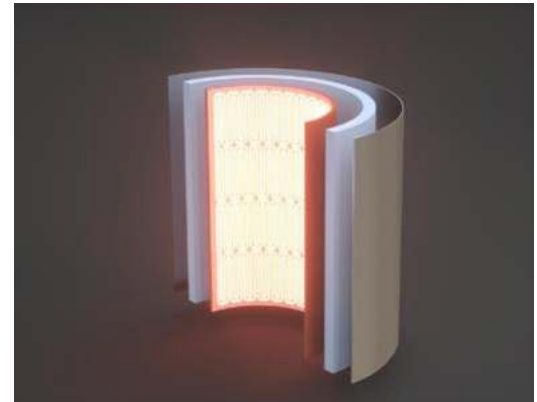
Dual Tumbler Heat Press



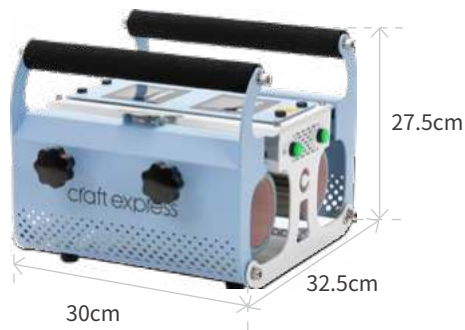
Two control panels allow the users to print two tumblers at once!



Individual Control Unit
Can operate separately



Upgraded Heating Attachment
It provides longer service life and even heating for each print.



Compatible Diameter: 7.2-8.8cm
Max. Printable Length: 24cm

Item No.	CE-DMP270
Power	1080W MAX±5%
Voltage	220V / 110V 50~60Hz
Temp. Range	0-250°C (0-482 °F)
Time Range	0-999 seconds
N.W.	11KG



Craft Express Portable Heat Press

No matter what you are creating, there's a press for you! Available in a small, medium and large size, the Craft Express Handheld Heat Press is perfect for creators of all levels.

Craft Express Heat Press



CEHP1012-LB
10" x 12"



CEHP0708-LB
7" x 8"



CEHP0203-LB
2" x 3"

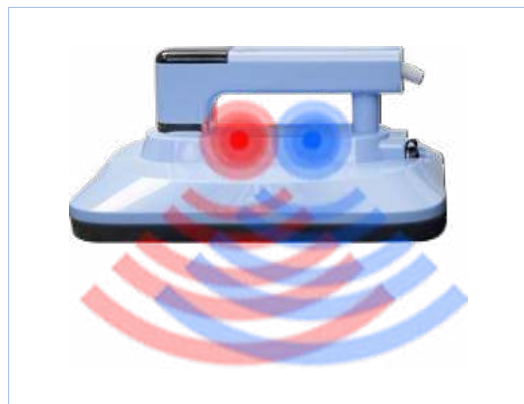
Eco Craft Express Heat Press



CEHPL0909LB
9" x 9"



CEHPL0203-LB
2" x 3"



Vibrations

It has two vibration motors that apply pressure to the item through vibration, freeing your hands

For: CEHP0708-LB & CEHP1012-LB



Peace of Mind

The soft transfer pad is designed to work alongside the Craft Express Handheld Press. Rest your press away in a specially designed heat resistant tray.



High-end Material

The Craft Express Handheld Press is engineered to achieve optimal temperatures for your projects.

Wide Application



Sublimation



HTV



Rhinestone Transfer

Which Heat Press Is Right For You?



Item No.	CEHP0203-LB	CEHPL0203-LB	CEHP0708-LB	CEHPL0909LB	CEHP1012-LB
Max. Printable Area	2" x 3"	2" x 3"	7" x 8"	9" x 9"	10" x 12"
Countdown	Yes	No	Yes	Yes	Yes
Vibration	No	No	Yes	No	Yes
Visible Screen	Yes	No	Yes	Yes	Yes
Power	300W / 150W MAX±5%	250W / 180W MAX±5%	1000W / 800W MAX±5%	900W/1000W MAX±5%	1000W / 800W MAX±5%
Voltage	220V / 120V 50~60Hz	220V / 110V 50~60Hz	220V / 110V 50~60Hz	220V / 110V 50~60Hz	220V / 110V 50~60Hz
Temp. Range	60-210°C (140-410 °F)	H 140°C / 284 °F M 160°C / 320 °F L 190°C / 371 °F	40-200°C (104-392 °F)	100-205°C (210-400 °F)	40-200°C (104-392 °F)
Time Range	10-999 seconds	No	0-999 seconds	0-600 seconds	0-999 seconds



craft express

DO NOT PLACE HOT SURFACE ON HOT TOUCH

Some things just fit you

Cutie

craft express

180° 180° 17:00

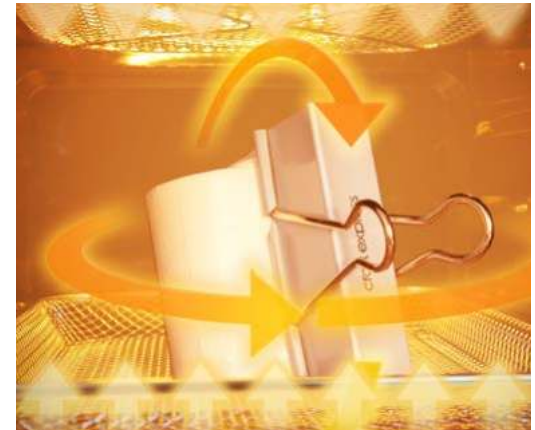


Strengths of Sublimation Oven

Small, But with All You Need for Sublimation Printing.



Printing More Products at Once



Perfect Printout Result

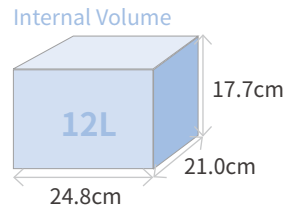
360° unique air heat circulation & Evenly heated



Can be applied for products of more different sizes and shapes

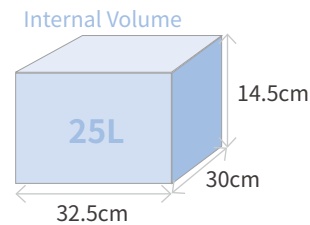


Achieve Larger Printing Area



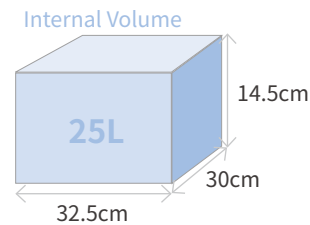
12L

Item No.	CE-KX12BL	Voltage	220/120V 50~60Hz
Heating Tube	2	Power	1600W
Time Range	1-60min	Temp. Range	60-200°C (140-390 °F)



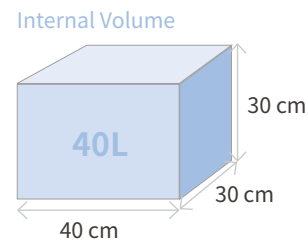
25L

Item No.	CE-KX25BL	Voltage	220/120V 50~60Hz
Heating Tube	4	Power	1600W
Time Range	1-60min	Temp. Range	0-230°C (32-446 °F)



25L

Item No.	CE-ECKX25SF	Voltage	220/120V 50~60Hz
Heating Tube	4	Power	1600W
Time Range	1-60min	Temp. Range	60-200°C (140-390 °F)



40L

Item No.	CE-KX40BL	Voltage	220/120V 50~60Hz
Heating Tube	6	Power	1800W/1700W
Time Range	1-60min	Temp. Range	60-230°C (140-446 °F)

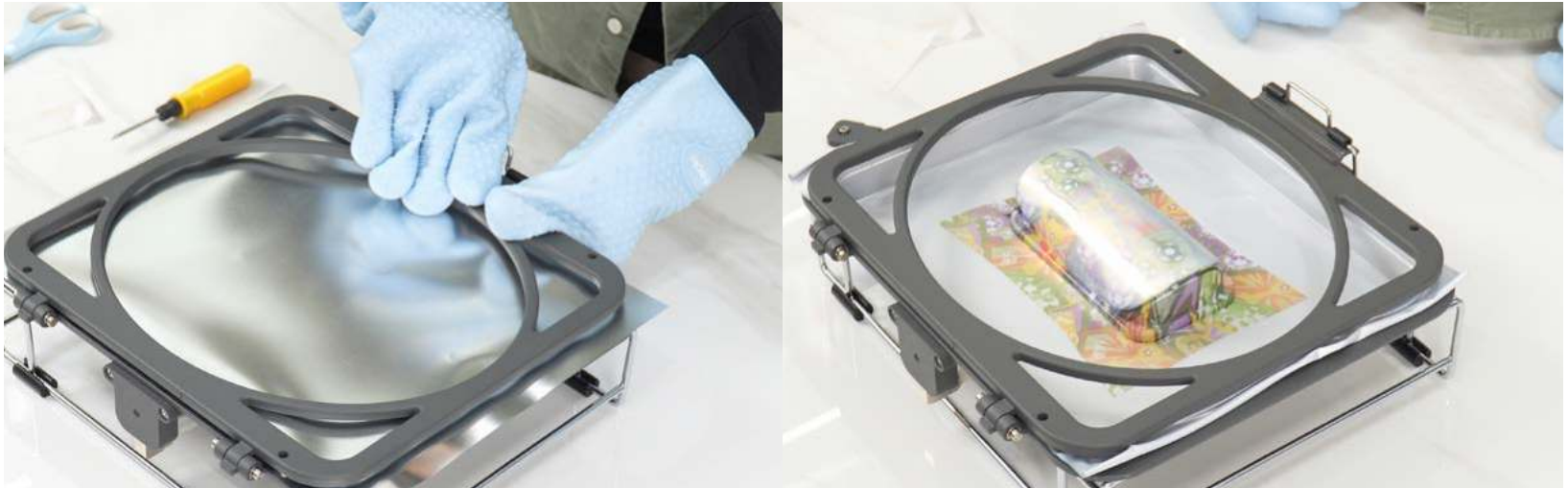


3D Contour Pro

The 3D Contour Pro Sublimation Vacuum Tray Set is designed specifically for the Craft Express Sublimation Oven 25L, unlocking its full potential. In addition to mugs and tumblers ranging from 1.5oz to 64oz, pair with this vacuum tray set enabling you to achieve 3D effects on uniquely-shaped items, flat surfaces, and even those hard-to-reach corners!

Item No.	CE-KX25VPSLB
Power	80W
Voltage	220V / 110V 50~60Hz





Achieving a perfect vacuum effect to ensure a seamless and precise fit!

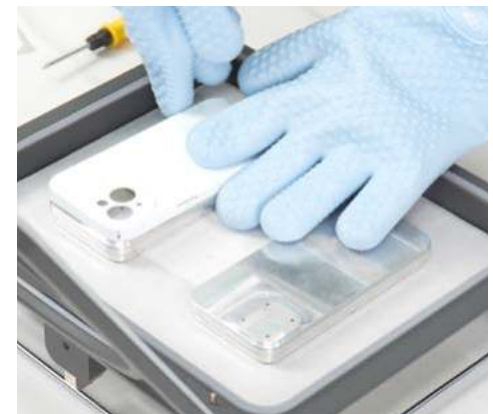
Additional Tools Required



Earphone Case Mold



Shin Guard Mold



Phone Case Mold

60L Sublimation Oven





Can be applied for products of more different sizes and shapes

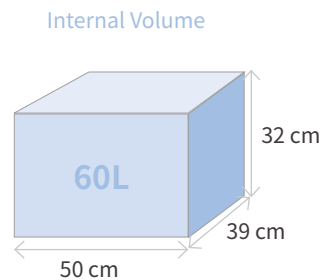


Printing More Products at Once



Perfect Printout Result

360° unique air heat circulation & Evenly heated



60L

Item No.	BKX60LB
Power	3500W
Voltage	220V / 120V 50~60Hz
Temp. Range	60-230°C (140-450 °F)
Time Range	1-60min
N.W.	38KG



356 60

craft express

Double Wall Stainless Steel Sublimation Skinny Tumbler

Double Wall Stainless Steel Sublimation Skinny Tumbler

Charlotte Se...
LAWYER

LOVE

Autopress Max FLAT PRESS EDITION



Item No.	OT-AUPB3838FLB	Temp. Range	40-205° C (104-401° F)
Power	1200W	Time Range	1-999 seconds
Voltage	230V/120V 50~60Hz	Printable Articles Max	38x38cm / 15x15in



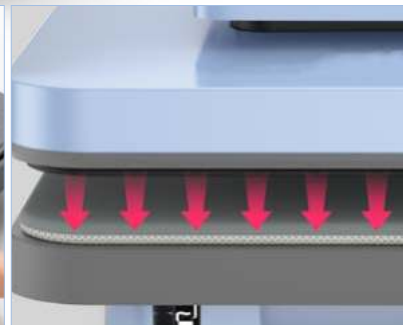
One Touch Mode

Just touch to repeat! Batch personalization has never been simpler with a single touch.



Retracting Drawer

Effortless and elegant handle design that saves space; the retracting drawer offers you more room for easy prep work.



Intelligent Pressure

For substrates up to 2 cm thick, perfectly consistent pressure every time, with no guesswork.



Premium Heating Element

Redesigned for unmatched efficiency and even heating with 15"x 15" heating platen.



Unmatched Clarity and Convenience

Discover the ease of an expanded screen for effortless navigation, visualization, and settings adjustment. Create more with a timer that extends up to 8 minutes for larger projects.



SURFING ALWAYS IN
California
WEST COAST DREAMIN

California
1981
CALIFORNIA SURFERS FOR THREE DECADES REPRESENTING
A PASSION OF SURF AND THE PERFECT WAVES AND SUNSHINE.
SUNNY CALIFORNIA IS THE PERFECT PLACE
1981

Kennedy
FAMILY 2022

2025

Best Friends Forever

Family Photo

Family Photo

Auto Heat Press



Easy Control Knob

One knob for 3 uses. Whether for on/off adjustment, parameter adjustment or opening and closing the machine, this one knob solves all your operations!



Auto-Open & Close

Simply close the machine with two fingers! Or the automatic device equipped saves you from opening or closing the machine, just drop your design and leave the rest to the Auto Heat Press



Auto Pressure Exertion

According to the thickness of your printed items, the heating platen auto-adjust and distributes even and edge-to-edge pressure automatically, reducing the guesswork and error of pressure adjustment.



Premium Heating Element

The advanced heated platen distributes pressure evenly, making all kinds of surfaces, fabrics and substrates perfect. The heating platen covers a 12" x 15" area for sublimation, large enough to allow you to print multiple items at once.



Item No.	CE-AUPB3038LB
Power	800W MAX±10%
Voltage	220V / 110V 50~60Hz
Temp. Range	40-205°C (104-401 °F)
Time Range	0-999 seconds
Printable Articles Max	300*380mm
N.W.	16.5KG



138
50
0.17

craft express

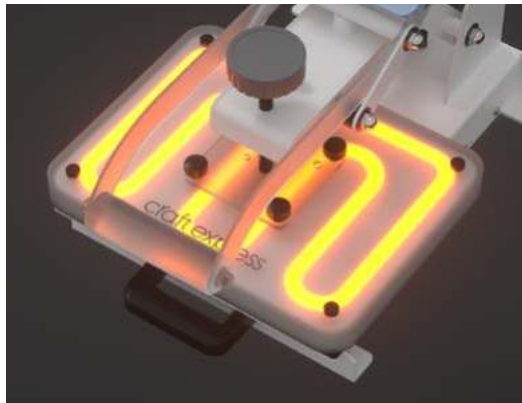
GARDEN FUN
you will be great!

MERRY CHRISTMAS
CHRISTMAS

Calligraphy



Craft Express Flat Heat Press 9"x12"



Premium Heating Element

The heat press features an evenly heating platen board, essential for ensuring consistent results when transferring heat onto your substrates. It also has a wider opening angle, allowing a safer work area.



Comfort Grip

Fully padded with a non-slip comfort grip, the heat press is created to be easy to use press after press. The base comes with a handle that makes it easy for you to lift and press the pressure handle.



Easy to Operate

Easy to read and easy-to-use screen display allows you to effortlessly change the settings for time and temperature.



Item No.	CE-PB2330NDLB	CE-PB2330NLB
Configurations	Drawer	Manual
Power	800W MAX±5%	
Voltage	220V / 110V 50~60Hz	
Temp. Range	0-250°C (0-482 °F)	
Time Range	0-999 seconds	
N.W.	16.5KG	
Printable Articles Max	230*300mm	



Clamshell Heat Press

Specially designed for DTF printing! Unlike the previous horizontal version, this 40x50cm/16x20inch vertical heating platen design is more suitable for garment printing. The uniformly heating platen ensures exceptional printing results every time, making it an excellent choice for a DTF heat transfer!



Premium Heating Element Vertical Heating Platen

The Heat Press features an even heating platen board, which is essential for ensuring consistent results when heat transfers onto your substrates.

Ideal for T-shirt printing

Item No.	OT-PB3838MDLB	OT-PB4050SMDLB	OT-PB4060MDLB
Heat Platen	38x38cm / 15x15in	40x50cm / 16x20in	40x60cm / 16x24in
Power	2000W /1300W MAX±5%	2200W /1600W MAX±5%	2400W /1800W MAX±5%
Voltage	220V / 110V 50~60Hz		
Temp. Range	0-250°C (0-482 °F)		
Time Range	0-999 seconds		

Optional Configurations

- Manual**
 - ✗ Slide-Out Drawer
 - ✗ Auto-Open
- Drawer**
 - ✓ Slide-Out Drawer
 - ✗ Auto-Open
- Auto-Open**
 - ✓ Slide-Out Drawer
 - ✓ Auto-Open



Semi-Automatic Double Station Heat Press Machine

Double the efficiency of your DTF heat transfer projects with our dual-station design. Now, you can do the prep work while printing, saving both time and effort!



High Efficiency

Dual Station
Smooth Sliding Design



Safety

Built-in Cooling System
Overload Protection
Emergency Stop
Overheat Protection
Protective Relay



Premium Construction

Aluminium Die Casting
Quick Heat-Up
Even Heating
Precision Cut Forging



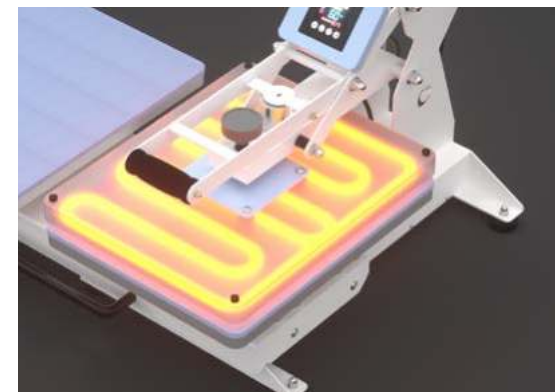
Convenient

Ease of Use
Touch-screen Design
Ideal for T-shirt Printing

Item No.	OT-DSPB4050LB
Heat Platen	40x50cm / 16x20in
Power	2200W / 1600W MAX±5%
Voltage	220V / 110V 50~60Hz
Temp. Range	0-250°C (0-482 °F)
Time Range	0-999 seconds



Smooth Sliding Design



Premium Heating Element

Air Press Swing Dual Station Heat Press

This air-operated heat press uses air pressure to apply consistent, uniform heat and pressure to your substrates. With its swing-away and double-station designs, you can prepare your next project while one is being printed, saving you time and effort!



High Efficiency

Dual Station
Swing-away Design
Air-operated
Auto Press & Release



Safety

Built-in Cooling System
Overload Protection
Emergency Stop
Overheat Protection
Protective Relay
Dual Buttons for Safer Operation



Premium Construction

Aluminium Die Casting
Quick Heat-Up
Even Heating
Precision Cut Forging



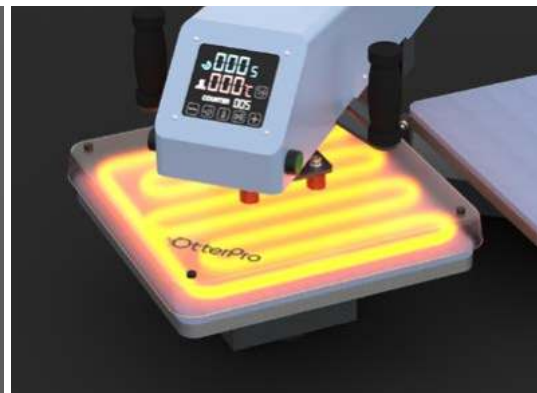
Convenient

Ease of Use
Touch-screen Design
Ideal for T-shirt Printing

Item No.	OT-DQSPBY3838LB	Voltage	220V / 110V 50~60Hz
Heat Platen	38x38cm / 15x15in	Temp. Range	0-250°C (32-482 °F)
Power	2000W /1300W MAX±5%	Time Range	0-999 seconds



Swing-away Design



Premium Heating Element



Automatic Pneumatic System

Air Press Slide Dual Station Heat Press

Maximize your heat transfer productivity and efficiency with this air-operated heat press! Slide, press, and repeat—batch personalization has never been easier!



High Efficiency

- Dual Station
- Smooth Sliding Design
- Air-operated
- Auto Press & Release



Safety

- Built-in Cooling System
- Overload protection
- Emergency Stop
- Overheat Protection
- Protective Relay
- Dual Buttons for Safer Operation



Premium Construction

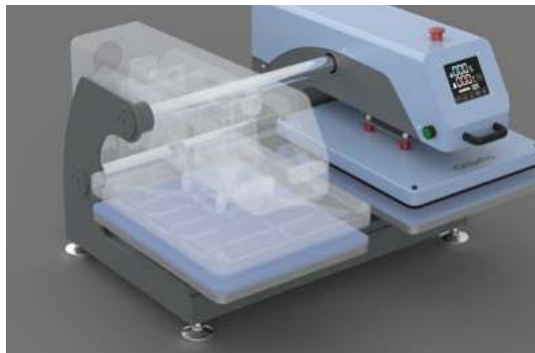
- Aluminium Die Casting
- Quick Heat-Up
- Even Heating
- Precision Cut Forging



Convenient

- Ease of Use
- Touch-screen Design
- Ideal for T-shirt Printing

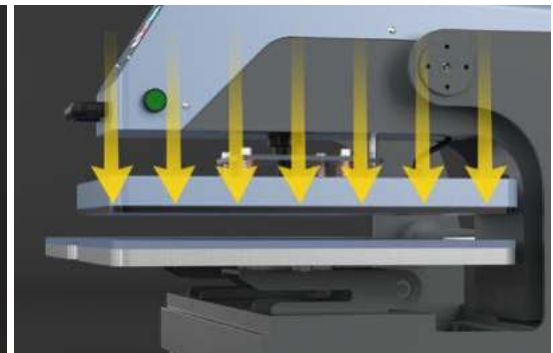
Item No.	OT-QSH4050LB	Voltage	220V / 110V 50~60Hz
Heat Platen	40x50cm / 16x20in	Temp. Range	0-250°C (32-482 °F)
Power	2200W /1600W MAX±5%	Time Range	0-999 seconds



Smooth Sliding Design



Premium Heating Element

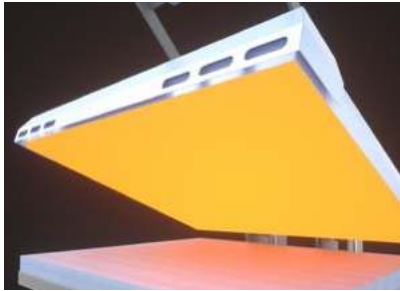


Automatic Pneumatic System

Large Format Heat Press

Unlock More Opportunities with a Larger Size for Mass Production!





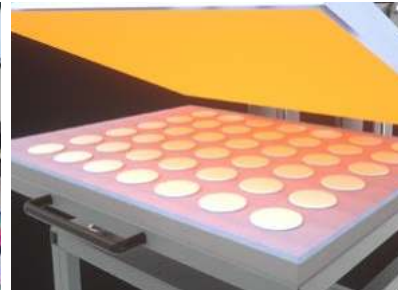
Premium Heating Element

The Heat Press features an evenly heating platen board, which is essential for ensuring consistent results when heat transfers onto your substrates.



Oversized Heating Platen

It has an oversized heating platen, suitable for making full printing on large creations, like towels, blankets, tablecloths, pants, banners and more.



High Efficiency

Unlike a small-format heat press, this heat press can print dozens of photo frames, ornaments, and even 4 t-shirts at the same time, significantly enhancing heat transfer efficiency.



Stable & Safe

With its anti-scald cover and air circuit breaker, it provides enhanced safety during operation.



OT-PB6080DSCB
60x80cm / 24x32in
✓ Slide-Out Drawer



OT-PB6080FSCB
60x80cm / 24x32in
✗ Slide-Out Drawer



OT-PB80100DLB
80x100cm / 32x40in
✓ Slide-Out Drawer



OT-PB80100DSCB
80x100cm / 32x40in
✓ Slide-Out Drawer

Large Format Heat Press

Item No.	OT-PB6080DLB	OT-PB80100DLB
Heat Platen	60x80cm / 24x32in	80x100cm / 32x40in
Power	6000W MAX±5%	6600W MAX±5%
Voltage	380V 50Hz	
Temp. Range	0-250°C (32-482 °F)	
Time Range	0-999 seconds	



Combo Craft Heat Press Machine

Discover endless possibilities at Craft Express New Combo Heat Press Machine! Whether for a craft business or anyone looking to explore a new crafting hobby, this combo is an optimal option! This combo embraces 8 different heaters, which offer you a wide range of printing solutions to meet your various personalized needs for printing all kinds of flat items, hip flasks, caps, pens and a wide range of drinkware! What's more, heater replacement is easier than ever, so get ready to be impressed by "9 heat presses"!

Combo



9 x 12 in Flat Heat Press



8 / 10 in Plate Heat Press



Hip Flask Heat Press



Shin Guard Heat Press



Cap Heat Press



Pen Heat Press



Mug/Tumbler Heat Press

Configuration Combo



Heating Attachments Available



CEHBPJ-B2330
Heating Board
Size: 20*30cm
Power: 800W



CEHBPJ-B1520
Heating Board
Size: 15*20cm
Power: 700W



CEHBPJ-KP8
Plate Heater
Size: 8 in
Power: 140W



CEHBPJ-KP10
Plate Heater
Size: 10 in
Power: 250W



CEHBPJ-JB
30oz Mug/Tumbler Press
Attachment



CEHBPJ-KM
Cap Heater
Power: 550W



CEHBPJ-KB
Pen Heater
Power: 150W



CEHBPJ-KH
Hip Flask Heater
Power: 120W

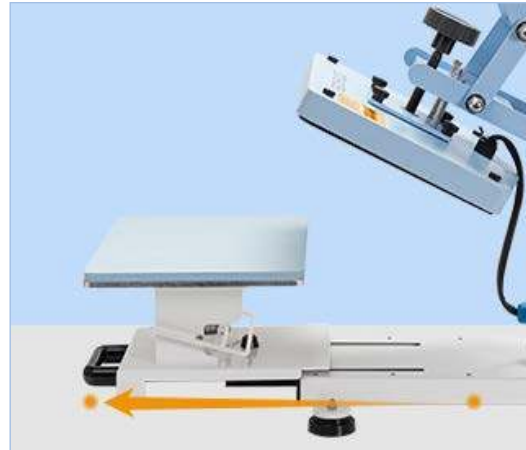


CEHBPJ-HD
Shin Guard Heating
Attachment
Power: 320W

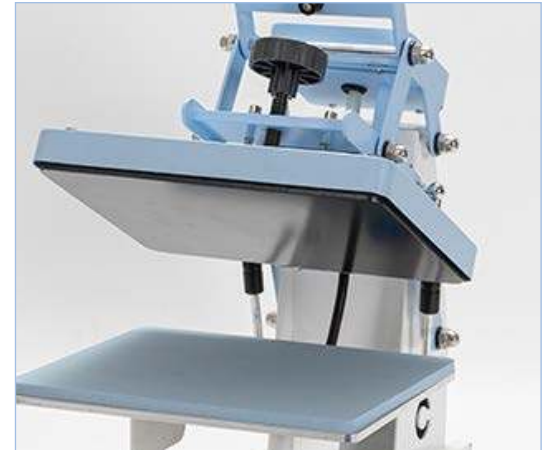
Power	800W MAX±5%	Temp. Range	0-250°C (32-482 °F)
Voltage	220V / 110V 50~60Hz	Time Range	0-999 seconds



Brand New Touch Panel - Easier to Operate;



Slide-Out Drawer Design;



Evenly Heating;



Aviation Cable Connector Design
Safe, Durable And Easy To Replace;



Innovative Interface Design, Easier To
Replace Accessories;



Compatible with All Heaters of Craft Express
Elite Tumbler Heat Press;



craft express

60.5
120
COUNTDOWN
ON

craft express

Burn Hazard
Hot Surface
Do Not Touch

Crush hazard.
Mind your hands.

JONATHAN

HEAT PRESS MACHINE(Combo)



Touch-screen Design

It features a large touch-screen display with clear icons, very simple and visual, even for beginners!



Pressure Knob

Adjust the pressure according to the thickness of the printed items.



Easy to Install

No need for extra tools! Simply attach and secure, and you'll be ready to start your new journey in minutes!



CEHBPJ-KM
Cap Heater
Power: 550W



CEHBPJ-KB
Pen Heater
Power: 150W



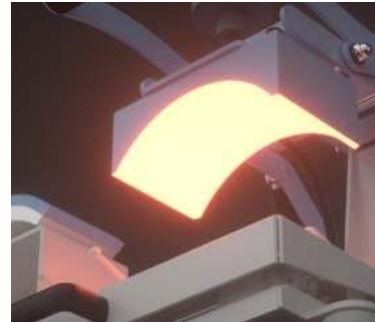
HEAT PRESS
Power: 550W



Item No.	CE-CP3IN1LBN	Temp. Range	0-250°C (32-482 °F)
Power	550W MAX±5%	Time Range	0-999 seconds
Voltage	220V / 110V 50~60Hz	N.W.	17.9KG

Two Station Cap Press

Designed with dual stations, it helps to maximize your efficiency on your cap personalization small business.



Premium Heating Element



User-friendly Touch-screen



Dual Stations, Double Efficiency

Item No.	CE-DCPLB
Power	550W MAX±5%
Voltage	220V / 110V 50~60Hz
Temp. Range	0-250°C (32-482 °F)
Time Range	0-999 seconds

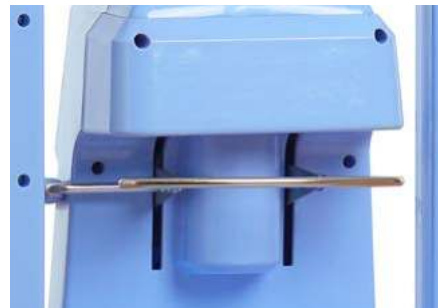
Auto Cap Press



Auto Press & Release



User-friendly Touch-screen



Cap Stretcher for Better Print Effect



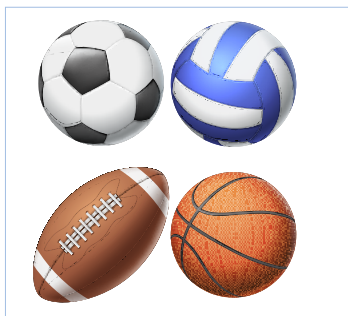
Portable & Space-saving



Premium Heating Element

Item No.	CE-AUCPLB
Power	350W MAX±5%
Voltage	230V / 120V 50~60Hz
Temp. Range	40-205°C (104-401 °F)
Time Range	0-999 seconds

Sports Ball Heat Press



It's specifically designed for personalizing sponsor logos and designs on inflatable sports balls, including footballs, soccer balls, basketballs, volleyballs, and more!



User-friendly Touch-screen



Premium Heating Element

Item No.	CE-BHPLB	Temp. Range	0-250°C (32-482 °F)
Power	600W MAX±5%	Time Range	0-999 seconds
Voltage	220V / 110V 50~60Hz		

OtterPro Ink Shaker

Skip the manual shaking! It helps evenly shake DTF ink to avoid precipitation and gives your printheads a longer service life.

Item No.	OT-YMQLB
Power	3.6 W
Voltage	110V-220V 50~60Hz



Small Format Flat Heat Press

Bring this vibrant pink to your home and workshop! This compact flat heat press takes up only a little desktop space but offer a large working area of 23cm x 30cm, capable to fully print out an A4 size design on various fabric items and hard flat items. It's an easy and must-have choice for new business starters!



CE-PB2330FBL



CE-PB2330FWH



CE-PB2330FPNK

Voltage	220V / 110V
Power	800W MAX±5%
Temperature	0-250°C (0-482 °F)
Time Range	0-999s
Heat platen size	23*30cm/ 9"x12"
N.W.	13KG

Clamshell Heat Press

The Heat Press can be used for a variety of flat items, perfect for printing on sublimation ornaments, tiles, slates, MDF coasters, plywood blanks, mouse pads, key chains, and apparel. With its even heating platen board, it's also a good choice for heat transfer vinyl. This is a great way to personalize t-shirts, tote bags, and more.



BPRO3838MDSCB



BPRO3838MDC



CEHPPRO3838MDPK



CEHPPRO3838MDLB

3 Configurations



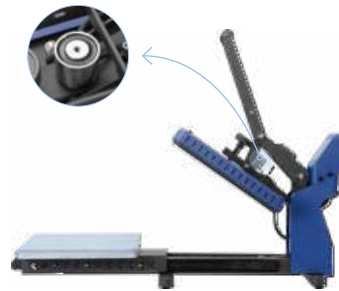
Manual

- ✗ Slide-Out Drawer
- ✗ Auto-Open



Drawer

- ✓ Slide-Out Drawer
- ✗ Auto-Open



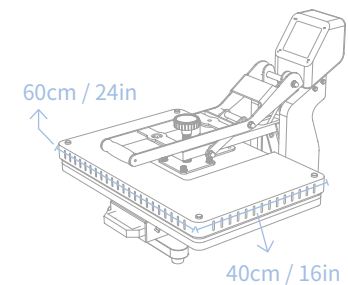
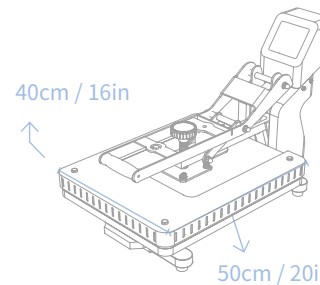
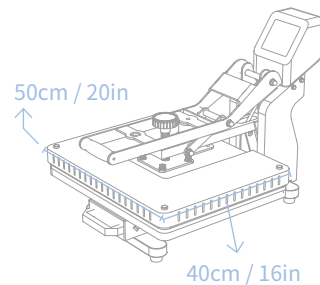
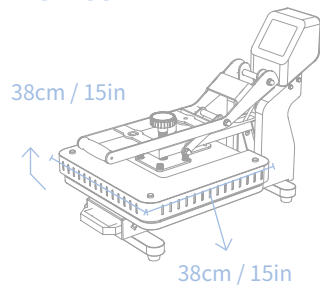
Auto-Open

- ✓ Slide-Out Drawer
- ✓ Auto-Open



HPPRO-ZB
Main Board

4 Sizes





Detachable Control Box

Evenly Heating

Digital Control Meter

Slide-Out Drawer Design



Equipped with the high-quality heat shield, it could prevent burns.

Better hardware fitting and finer frame design.

Electric lifting magnet, built in auto-open device.

Pressure-adjustment Knob - according to the thickness of the material you're sublimating to.

Heat Platen	38x38cm / 15x15in		40x50cm / 16x20in		40x60cm / 16x24in		Frequency	Parameter
Voltage	220V	110V	220V	110V	220V	110V	50~60Hz	Temp. Range: 0-250°C (32-482 °F) Time Range: 0-999 seconds
Power	2000w	1300w	2200w	1600w	2400w	1800w		



Don't Stop
Until You
Are
Proud!



Swing Away Heat Press

BestSub Swing Away Heat Press is designed to elevate your heat transfer experience. Boasting a 120° manual swing-away design enhanced with a built-in heat shield, this press prioritizes both ease and safety during operation. It comes with a detachable touchscreen panel for easy transportation and mode setting. In addition, the large heat platen offers precise temperature and delivers consistent and even heat distribution for vibrant and long-lasting transfers on a wide variety of materials, including tiles, slates, MDF coasters, plywood blanks, mouse pads, key chains, apparel and multiple ornaments. Whether you're a professional in the garment decoration business or a hobbyist looking to personalize items, this heat press offers a reliable solution for digital printing with excellent clarity and durability.



High-Quality Heat Shield



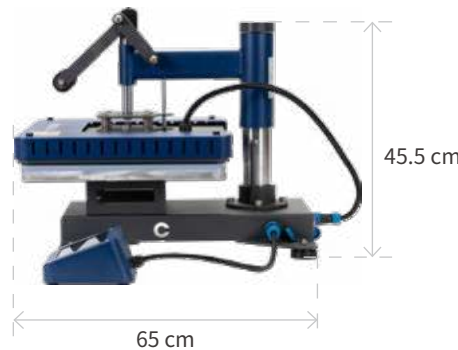
Evenly Heating



120° Swing Away Design



Detachable Control Box



Heat Platen	38x38cm / 15x15in	40x50cm / 16x20in		
Item No.	BYPRO3838SCB	BYPRO4050SCB		
Voltage	220V	110V	220V	110V
Power	2000w	1300w	2200w	1600w
Frequency	50~60Hz			
N.W.	30KG		34.8KG	
Parameter	Temp. Range:0-250°C (32-482 °F) Time Range:0-999 seconds			

Heat Press Accessories

Heat Press Mat



CE-HMD230300
Size: 23*30cm

CE-HMD295345
Size: 29.5*34.5cm

CE-HMD290380
Size: 29*38cm

CE-HMD380380
Size: 38*38cm

CE-HMD400600
Size: 40*60cm

Heat Printing Pillow



TFD5050 50.8*50.8cm
TFD3850 38*50cm
TFD1744 17.5*44.5cm
TFD4042 40.7*42cm
TFD2829 28*29.5cm
TFD1719 17*19cm

Conductive Silicone Wraps

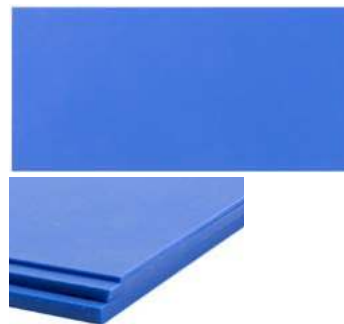
A Simple Tool Helps to Print More

GJP15-2512
1.5mm Size:25*12cm

GJP34-2512
3.4mm Size:25*12cm

GJP43-2512
4.3mm Size:25*12cm

CEGJPMX-3-1
1.5mm x1
3.4mm x1
4.3mm x1



Heat Press Accessories

Thermal Tape Dispenser(Combo)



CEJDZ03
Size: 46mm



CE-FQLB
Foldable Heater Blower Gun
Before Folding Size: 25*12*7cm
After Folding Size: 25*25*7cm



CE-CWJ
Extra Large Binder Clips
Size: 14.5*13cm



CEJD468-LB
Heat Resistant Tape
Size: 4cm*33m



CEJD268-PK
Heat Resistant Tape
Size: 2cm*33m



CEJD268-LB
Heat Resistant Tape
Size: 2cm*33m



CESTLB
Heart Pattern Silicone Glove
(each piece)
Size: 20*33cm



TLR3
Lint Roller

Butcher Paper For Sublimation

200 Sheets/Pack, 40 G

Item No.	size	Item No.	size
CEGLZ100240	3.9 x 9.4 in / 100 x 240 mm	CEGLZ230290	9 x 11.4 in / 230 x 290 mm
CEGLZ110250	4.3 x 9.8 in / 110 x 250 mm	CEGLZ290450	11.4 x 17.7 in / 290 x 450 mm
CEGLZ210240-N	8.7 x 9.8 in / 220 x 248 mm	CEGLZ305305	12 x 12 in / 305 x 305 mm





Shrink Film Sleeve

Shrink film wrap is the essential printing tool to use with sublimation oven and discover more DIY possibilities. Once heated, it will shrink to generate proper pressure to wrap the substrate tightly, therefore improve the ink absorption and create vivid printout results. It will never be a problem to imprint large and irregular-shaped drink ware partially or fully, and even realize seamless socks printing. Moreover, we can customize the size of shrink film to best fit your substrates and machines, to meet your requirements.

Max Heat-Resistant: 180°C /356 °F

Customize the Size You Want

Item No.	Size	Item No.	Size	Item No.	Size
RSMW70-1	135*70mm	RSMW150-4	250*150mm	RSMW195-2	230*195mm
RSMW70-2	180*70mm	RSMW150-115	300*115mm	RSMW195-3	300*195mm
RSMW80-1	90*80mm	RSMW150-5	300*150mm	RSMW230-140	460*140mm
RSMW105-1	165*105mm	RSMW165-1	230*165mm	RSMW235-1	80*235mm
RSMW125-1	110*125mm	RSMW165-2	260*165mm	RSMW235-2	150*235mm
RSMW125-2	130*125mm	RSMW175-1	120*175mm	RSMW235-300	300*235mm
RSMW125-3	160*125mm	RSMW175-2	250*175mm	RSMW235-350	350*235mm
RSMW125-4	190*125mm	RSMW175-3	300*175mm	RSMW250-300	250*300mm
RSMW125-5	250*125mm	RSMW175-185	175*185mm	RSMW330-1	330*100mm
RSMW150-1	120*150mm	RSMW180-1	100*180mm	RSMW335-1	335*150mm
RSMW150-2	180*150mm	RSMW180-2	280*180mm	RSMW335-300	335*300mm
RSMW150-3	135*150mm	RSMW195-1	150*195mm		

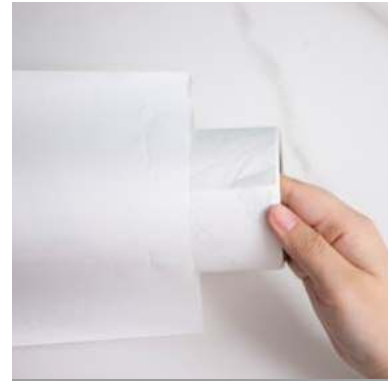
How to use?



1. Stick the image on substrate;



2. Wrap the substrate with a piece of protective paper;



3. Place a suitable shrink film around the substrate;



4. Heat the shrink film to make it fit tightly with the substrate;



5. Print the substrate with sublimation oven.



Silicon Wraps



KLBJ-01
1.5oz Shot Glass Wrap



KLBJ-3
3oz Shooter Glass Wrap



KLBJ-6
6oz Mug Wrap



KLBJ-11MK
11oz Mug Wrap



KLBJ-12
12oz Mug Wrap



KLBJ-17BL
17oz Glass Mug Wrap



KLBJ-17MK
17oz Ceramic Mug Wrap



KLBJ-TW
Ceramic Bowl Wrap



PJB9-N/PJB15-BL
Mug Wrap
11oz/15oz



PJBS16/PJBS17
1.5/3oz Shot Glass Wrap



KLBJ-3MK
3oz Mini Ceramic Mug Wrap



KLBJ-8JH
8oz Stainless Steel
Flask Wrap



KLBJ-4LH
400ml Bottle Wrap



KLBJ-6LH
600ml Bottle Wrap



KLBJ-20MK
20oz Ceramic Mug Wrap



KLBJ-0D5L/KLBJ-22PJ
0.5L/22oz
Beer Mug Wrap



KLBJ-XRB
30oz Tumbler Wrap



ZK-MFD
Silicon Vacuum Bag Unit



KLBJ-GP/KLBJ-MP
Dog/Cat Bowl Wrap



PJB20T
Size: 265*205*1.4mm
or Skinny Tumbler

Printing Parameter

No.	Item Name	Temp.(°C / °F)	Time(S)	Remark
1	11oz Ceramic Mug/Glass Mug 15oz Ceramic Mug	180°C 360 °F	120-150	<ol style="list-style-type: none"> 1. Print on sublimation paper, mirror image; 2. Use JTrans mug press; 3. Place the mug into the mug press in proper position to avoid handle breaking; 4. Use medium pressure.
2	Water Bottle Tumbler (Aluminum/Stainless Steel Material)	180°C 360 °F	35-45	<ol style="list-style-type: none"> 1. Print on sublimation paper, mirror image; 2. Use JTrans mug press; 3. Take off the lid before printing; 4. Use low pressure.
3	Ceramic Plate	190°C 375 °F	240	<ol style="list-style-type: none"> 1. Print on sublimation paper, mirror image; 2. Place the plate flat; 3. Use medium pressure.
4	Ceramic Tile	180-190°C 360-375 °F	150-200 300-420	<ol style="list-style-type: none"> 1. Print on sublimation paper, mirror image; 2. Use flat heat press; 3. Print with the printable side facing the silicone mat for better result; 4. Use medium pressure.
5	Ceramic Ornament	180°C 360 °F	100	<ol style="list-style-type: none"> 1. Print on sublimation paper, mirror image, and print two images for an ornament; 2. Fix the images to both sides of the ornament; 3. Flip over and print another 100S after printing one side; 4. Use medium pressure, to prevent the ornament from being crushed.
6	Metal Board(Aluminum/Metal Material)	200°C 360-390 °F	40	<ol style="list-style-type: none"> 1. Print on sublimation paper, mirror image; 2. Tear off the protective film on the insert before printing; 3. Use flat heat press; 4. Use high pressure.
7	Imported Grade LA J·iCase® Aluminum Sheet	180°C 360 °F	45	<ol style="list-style-type: none"> 1. Print on sublimation paper, mirror image; 2. Tear off the protective film on the insert before printing; 3. Print with the image facing down; 4. Use medium pressure.
8	Imported Grade A and AA J·iCase® Aluminum Sheet	180°C 360 °F	55	<ol style="list-style-type: none"> 1. Print on sublimation paper, mirror image; 2. Tear off the protective film on the insert before printing; 3. Print with the image facing down; 4. Use medium pressure.
9	Plastic Christmas Ornament(Both -side Printable)	180°C 360 °F	50	<ol style="list-style-type: none"> 1. Print on the sublimation paper, mirror image; 2. Print one side for the 50s; 3. Peel off the image after printing the first side, wait for cooling and print the second side for the 50s.

No.	Item Name	Temp.(°C / °F)	Time(S)	Remark
10	Imported CL Aluminum Board	190°C 375 °F	100	<ol style="list-style-type: none"> 1. Print on the sublimation paper, mirror image; 2. Print with the image facing down; 3. Use low or medium pressure.
11	Lighter	180°C 360 °F	90-120	<ol style="list-style-type: none"> 1. Print on sublimation paper, mirror image; 2. Both sides are sublimatable; 3. Use medium pressure, or the lighter will deform.
12	Stainless Steel Bottle Opener	180°C 360 °F	100	<ol style="list-style-type: none"> 1. Print on sublimation paper, mirror image; 2. Fix images on both the two sides, print one size for 60 seconds, then flip it over to print the other side for 40 seconds; 3. Use medium pressure, or the bottle opener will deform.
13	Metal Name Card	180°C 360 °F	40	<ol style="list-style-type: none"> 1. Print on sublimation paper, mirror image; 2. Printing image face down; 3. Both sides are printable, print one side then the other; 4. Cover with protective paper.
14	Sublimation Glass Frame	180°C 360 °F	120	<ol style="list-style-type: none"> 1. Print on sublimation paper, do not mirror image; 2. Don't stick the thermal tape on the printable side; 3. Print the glass frame with printable side facing the heat platen; 4. Use medium pressure.
15	Glass Cutting Board(Tempered Glass)	180°C 360 °F	120-180	<ol style="list-style-type: none"> 1. Print on sublimation paper, no mirror image; 2. Use flat heat press; 3. Use medium pressure.
16	Sublimation Crystal	180°C 360 °F	120-180	<ol style="list-style-type: none"> 1. Print on sublimation paper, no mirror image; 2. Don't stick the thermal tape on the printable side; 3. Put the crystal on the worktable with the back side facing the heat platen, and preheat for 2-3 minutes; 4. Flip it over with the printable side facing the heat platen, and print for 2-3 minutes.
17	Photo Slate	180°C 360 °F	420-600	<ol style="list-style-type: none"> 1. Print on sublimation paper, mirror image; 2. Match the image and printable side tightly without margin; 3. Printing image side down, preheat the silicone mat before printing; 4. Use medium pressure.
18	Marble Coaster	180°C 360 °F	150	<ol style="list-style-type: none"> 1. Print on the sublimation paper, mirror image; 2. Print the coaster with image facing down; 3. Use medium pressure.
19	Shell Necklace/Earring	180°C 360 °F	60-90	<ol style="list-style-type: none"> 1. Separate the pendant from necklace or ear hook; 2. Print on sublimation paper, mirror image; 2. Fix images on both the two sides, print one side for 60 seconds, then flip it over to print the other side for 30 seconds; 3. Connect the pendant to necklace or ear hook.

No.	Item Name	Temp.(°C / °F)	Time(S)	Remark
20	Plastic Mug	170°C 340 °F	120	<ol style="list-style-type: none"> 1. Print on sublimation paper, mirror image; 2. Put the printing tool into the mug before printing to avoid deformation; 3. Use low pressure.
21	FRP Flat Item	190°C 375 °F	60	<ol style="list-style-type: none"> 1. Print on sublimation paper, mirror image; 2. Peel off the protection film before printing; 3. Use low pressure.
22	Acrylic	180 360 °F	80	<ol style="list-style-type: none"> 1. Print on sublimation paper, do not mirror image; 2. Before printing, peel off the protection film on the printed side; 3. Use low pressure; 4. After printing, peel off the protection film on the backside.
23	Sublimation Film	190°C 375 °F	60	<ol style="list-style-type: none"> 1. Print on sublimation paper, do not mirror image; 2. Print on the frosted side.
24	Wine Bottle Adhesive Sticker	180°C 360 °F	100	<ol style="list-style-type: none"> 1. Print on sublimation paper, do not mirror image; 2. Print on a smooth surface, and fix the image with heat-resistant tape; 3. Peel off the backing paper after printing, and stick it on the wine bottle.
25	Hardboard Items	190°C 375 °F	70-110	<ol style="list-style-type: none"> 1. Print on sublimation paper, mirror image; 2. Tear off protection film before printing; 3. Use medium pressure.
26	Plywood	190°C 375 °F	50	<ol style="list-style-type: none"> 1. Print on sublimation paper, mirror image; 2. Use low pressure;
27	Puzzle(Paper/Felt/Fabric/ Hardboard Material)	180°C 360 °F	120	<ol style="list-style-type: none"> 1. Print on sublimation paper, mirror image; 2. Match image and printable side tightly without margin; 3. Use medium pressure.
28	Fridge Magnet	180°C 360 °F	120	<ol style="list-style-type: none"> 1. Print on sublimation paper, mirror image; 2. Use flat heat press; 3. Use medium pressure.
29	T-Shirt (Light Color Cotton Material) Use ZQA4/ZQA3 light color transfer paper printing	180°C 360 °F	25	<ol style="list-style-type: none"> 1. Printing on light color transfer paper through printer with pigment ink, mirror image; 2. Print with flat heat press in high pressure; 3. Peel off the transfer paper immediately after printing; 4. For light-color cotton T-shirts only.

No.	Item Name	Temp.(°C / °F)	Time(S)	Remark
30	T-Shirt (Dark Color Cotton Material) Use ZSA4/ZSA3 dark color transfer paper printing	180°C 360 °F	25	<ol style="list-style-type: none"> 1. Printing on dark color transfer paper through printer with pigment ink, do not mirror image; 2. Peel off base paper before printing, stick the image on T-shirt upwards and put silicon paper above; 3. Print with flat heat press in high pressure; 4. Cold peel only; 6. For dark-color T-shirts only.
31	T-Shirt (Light Color Cotton Material) Use JETPRO Light color transfer paper printing	190°C 375 °F	18	<ol style="list-style-type: none"> 1. Printing on light color transfer paper through printer with pigment ink, mirror image; 2. Print with flat heat press in high pressure; 3. Peel off the transfer paper immediately after printing; 4. For light-color cotton T-shirts only.
32	T-Shirt (Dark Color Cotton Material) Use G JET dark color transfer paper printing	170°C 340 °F	15	<ol style="list-style-type: none"> 1. Printing on dark color transfer paper through printer with pigment ink, do not mirror image; 2. Peel off base paper before printing, stick the image on T-shirt upwards and put silicon paper above; 3. Print with flat heat press in high pressure; 4. Cold peel only; 6. For dark-color T-shirts only.
33	Vinyl	160°C 320 °F	10-15	<ol style="list-style-type: none"> 1. Cut mirror image with vinyl cutter; 2. Tear or cut off leftover vinyl; 3. Lay the cut-out vinyl on T-shirt and sublimate; 4. Cold peel.
34	Poli-Tape Vinyl	160°C 320 °F	15	<ol style="list-style-type: none"> 1. Cut mirror image with vinyl cutter; 2. Tear or cut off leftover vinyl; 3. Lay the cut-out vinyl on T-shirt and sublimate; 4. Cold or hot peel.
35	Poli-Tape Subli-Print Vinyl	190°C 375 °F	30	<ol style="list-style-type: none"> 1. Print image on vinyl; 2. Cut out image with vinyl cutter; 3. Lay the cut-out vinyl on T-shirt and sublimate; 4. Cold or hot peel.
36	Subli-Cotton Fabric	190°C 375 °F	60	<ol style="list-style-type: none"> 1. Print on the sublimation paper, mirror image; 2. The image should be larger than an A4 paper. Put the fabric on a T-shirt with the rough side facing down, put the image on the fabric, put a silicon paper above, and start printing; 3. Peel off the transfer paper carefully after printing.
37	Metallic Film	180°C 360 °F	10	<ol style="list-style-type: none"> 1. Print on the sublimation paper, mirror image; 2. The image should be larger than the metallic film. Press the film onto the T-shirt for 10s in 180°C , and peel off after cooling down; 3. Press the image on the T-shirt for 25s in 190°C , and peel off immediately or after cooling down.
38	Sequin Adhesive	180°C 360 °F	120	<ol style="list-style-type: none"> 1. Print on the sublimation paper, mirror image; 2. Flip the sequins with white side facing up, and peel off the back film; 3. Place the adhesive on the t-shirt, cover it with image, and print; 4. Flip the sequins immediately after printing.

No.	Item Name	Temp.(°C / °F)	Time(S)	Remark
39	Faux Rhinestone Transfer Sheet(For Cloth)	160°C 320 °F	15	1. Use high pressure, preheat to 160°C and begin to print; 2. When the time is up, take out the cloth. Peel off the transfer sheet immediately or after cooling down. The faux rhinestone pattern can be customized
40	Faux Rhinestone Transfer Sheet(For Ceramic Mug)	140°C 285 °F	30	1. Use high pressure, preheat to 140°C and begin to print; 2. When the time is up, take out the mug. Peel off the transfer sheet after cooling down. The faux rhinestone pattern can be customized
41	Faux Rhinestone Transfer Sheet(For Metal Mug)	110°C 230 °F	30	1. Use high pressure, preheat to 110°C and begin to print; 2. When the time is up, take out the mug. Peel off the transfer sheet after cooling down. The faux rhinestone pattern can be customized
42	T-Shirt/Textile (100% Polyester Material Light-colored fabric)	190°C 375 °F	60	1. Print on sublimation paper, mirror image; 2. Use flat heat press; 3. Use high pressure; 4. Only for non cotton material, polyester mostly.
43	Neoprene	180°C 360 °F	120	1. Print on sublimation paper, mirror image; 2. Do not apply too much pressure when printing to avoid deforming.
44	Wallet Case	180°C 360 °F	120	1. Print on sublimation paper, mirror image; 2. Don't press on leather; 3. Use high pressure.
45	Cap	220°C 430 °F	60	1. Print on sublimation paper, mirror image; 2. Use cap press or 8-in-1 heat press, print in low pressure; 3. Press the green button, and press down immediately.
46	Leathaire Pillow cover	190°C 375 °F	60	1. Print on sublimation paper, mirror image; 2. Cover a silicon paper on the sublimation paper to avoid paper sticking to the heat platen; 3. Be careful not to press on the zipper; 4. Use medium or low pressure.
47	Glitter/Gradient Color Pillow Cover	180°C 360 °F	60	1. Print on sublimation paper, mirror image; 2. Put a piece of protective paper under the pillow cover; 3. Print one side first then the other.
48	PU Keychain	180-190°C 360-375 °F	40-50	1. Print on the sublimation paper, mirror image; 2. Take off the metal ring before printing.
49	Ping-Pong Racket	180-190°C 360-375 °F	40-50	1. Print on the sublimation paper, mirror image; 2. Print two racket simultaneously. Put one racket each on the left and right sides of worktable to ensure balance and even heating.

No.	Item Name	Temp.(°C / °F)	Time(S)	Remark
50	Plastic Domino	180°C 360 °F	200	1. Print two mirror images on sublimation papers; 2. Tape the images on both the two sides; 3. Press one side for 100 seconds, flip it over, and press the other side for another 100 seconds;
51	Pen	145°C 290 °F	120	1. Print mirror image on laser paper using laser printer; 2. Put the pen on the pen heater, adjust the pressure to low pressure; 3. Heat the pen in 145°C ; 4. Wait until the pen gets cold, peel off the paper.
52	Shin Guard	200°C 392 °F	270	1. Print on the sublimation paper, mirror image; 2. Tape the image on the shin guard with heat-resistant tape; 3. Use large pressure, When the machine reaches 200 °C , put it in and start printing directly on the countdown; 4. Apply the pad to the shin guard after printing.
53	Digital Mug Bottom Heat Press for ceramic mug bottom	220°C 430 °F	400	1. Print on the sublimation paper, mirror image; 2. Tape the image on the bottom of the mug; 3. Press the green button to start printing when the temperature drops; 4. peel off the image at the end of printing.

1. The above mentioned time &temperature parameters are just for equipment made by our factories. It may be different from other factories;
2. The temperature is "Fahrenheit";
3. Above listed parameters are only for suggestions from our own experience. You can also try and find out the best from your own operation.

Note:

1. Do not heat the machine without mug in the heaters or it could burn out; Do not touch the heating elements directly without any protection, or you could be hurt; After running more than 1.5 hours, it is better to turn off the machine for a 20-minute-break.
2. Trouble-shootings on a regular period basis.

FAQS:

1. The color is a bit light: the temperature is too low, or the pressure is unbalanced, or the time is too short;
2. The picture is vague: the pressing time is too long causing the ink to spread;
3. The cover of the print is not brilliant: the pressure is too heavy;
4. The print is partially vague: the heat of pressed area is unbalanced;
5. The print has scar: the pressing time is too long;
6. The print is in different level color: The pressure is unbalanced or the cover printing material is not balanced;
7. Sticking papers: the temperature is too high or the cover of printing material is not so good.

Portable Heat Press Printing Parameter

FUNCTION	1	The machine comes with two motors, one is for working while the other is a spare motor. Both the motors work in the same three vibration modes, and “1-1” ,1-2” , and “1-3” on the screen indicate each vibration frequency of motor 1, while “2-1” ,2-2” , and “2-3” are for motor 2.
	2	The frequency of 1-3 or 2-3 is perfect for printing flat items.
	3	More mug heaters in different sizes are coming soon. Once the mug heater is attached to the machine, it will heat up instead of the flat heat platen.
	4	Long press on power button for 3 seconds to turn on or turn off the machine.
	5	Press power button to start or stop counting down, or stop the machine from beeping after printing.
	6	Press "+" and "-" buttons in countdown mode to set the vibration frequency.
	7	Press "Set", "+", and "-" buttons to adjust temperature and time.
	8	Press "+" and "-" simultaneously to switch between °C and °F .

No.	Item	Temp.	Time	Vibration Frequency	Note
1	Polyester Clothes	200°C	60S	1-3 or 2-3	<ol style="list-style-type: none"> 1. Print on sublimation paper, mirror the image; 2. Make sure that buttons and zippers don't touch the heat platen; 3. Fix the image with thermal tape.
2	Ceramic Coaster	180°C	150S	1-3 or 2-3	<ol style="list-style-type: none"> 1. Print on sublimation paper, mirror the image; 2. Fix the image with thermal tape.
3	Hardboard Coaster	180°C	120S	1-3 or 2-3	<ol style="list-style-type: none"> 1. Print on sublimation paper, mirror the image; 2. Peel off the top film; 3. Fix the image with thermal tape.
4	Phone Cover Alu Insert	180°C	80S	1-3 or 2-3	<ol style="list-style-type: none"> 1. Print on sublimation paper, mirror the image; 2. Peel off the top film; 3. Fix the image with thermal tape.
5	11oz Ceramic Mug	180°C	260S	1-0 or 2-0 (No Vibration)	<ol style="list-style-type: none"> 1. Print on sublimation paper, mirror the image; 2. Fix the image with thermal tape; 3. Use mug heater; 4. After printing, press power button then take out the mug.
6	Sequin Adhesive	180°C	120S	1-0 or 2-0 (No Vibration)	<ol style="list-style-type: none"> 1. Print on the sublimation paper, mirror image; 2. Flip the sequins with white side facing up, and peel off the back film; 3. Place the adhesive on the t-shirt, cover it with image, fix the image with thermal tape, and print; 4. Flip the sequins immediately after printing.

Elite Tumbler Heat Press Printing Parameters

Item Name	Temp.(°C / °F)	Time(S)
11oz Ceramic Mug	180°C / 360 °F	280
<ol style="list-style-type: none"> 1. Print on sublimation paper, mirror image; 2. Tape the image on the mug with heat-resistant tape and put the mug into the heat press to adjust pressure; 3. Take out the mug, and let the machine preheat to 180°C . You can put two unused mugs into the heater while it' s preheating to extend its life; 4. As the machine heats up to 180°C , take out the unused mugs, and put the printed mugs inside; 5. Take out the mug when the time is up; 6. Peel off the image. <p>Tip: Please put the two mugs into the heater with bottom to bottom, no gap in between, to avoid an uneven heater after multiple uses.</p>		
Glass Mug	180°C / 360 °F	280
<ol style="list-style-type: none"> 1. Print on sublimation paper, mirror image; 2. Tape the image on the mug with heat-resistant tape and put the mug into the heat press to adjust pressure; 3. Take out the mug, and let the machine preheat to 180°C . You can put two unused mugs into the heater while it' s preheating to extend its life; 4. As the machine heats up to 180°C , take out the unused mugs, and put the printed mugs inside; 5. Take out the mug when the time is up; 6. Peel off the image. <p>Tip: Please put the two mugs into the heater with bottom to bottom, no gap in between, to avoid an uneven heater after multiple uses.</p>		
Borosilicate Glass Mug	180°C / 360 °F	Partial image: 120-150s Full image: 90-150s and 40-130s for second time
<ol style="list-style-type: none"> 1. Print on sublimation paper, mirror image; 2. Tape the image on the mug with heat-resistant tape and put the mug into the heat press to adjust pressure; 3. Take out the mug, and let the machine preheat to 180°C . You can put an unused mug into the heater while it' s preheating to extend its life; 4. As the machine heats up to 180°C , take out the unused mug, and put the printed mugs inside. If you want to print a partial image in the middle of the bottle, one press for 120-150 seconds is enough; 5. If you want to print a full image around the bottle, press for 90-150 seconds, rotate it 180 degrees, and press it again for 40-130 seconds; 6. Peel off the image. <p>Tip:</p> <ol style="list-style-type: none"> 1. Take off the lid before printing; 2. Wear heat-resistant gloves to avoid burns; 3. Adjust the printing time according to the size of the mug; 4. Please put the two mugs into the heater with bottom to bottom, no gap in between, to avoid an uneven heater after multiple uses. 		

Item Name	Temp.(°C / °F)	Time(S)
11oz Plastic Mugs	180°C / 360 °F	280
<ol style="list-style-type: none"> 1. Print on sublimation paper, mirror image; 2. Insert the printing tools into the mugs, put the mugs into the heater, and adjust the printing pressure; 3. Take out the mugs, and let the machine preheat to 180°C . You can put two unused mugs into the heater while it's preheating to extend its life; 4. As the machine heats up to 180°C , take out the unused mugs, and put the printed mugs inside; 5. Take out the mugs and remove the printing tools. If the mugs are a bit deformed, press slightly to shape them with your hands while they're still hot; 6. Peel off the image; <p>Tip: Please put the two mugs into the heater with bottom to bottom, no gap in between, to avoid an uneven heater after multiple uses.</p>		
Metal Bottle	180°C / 360 °F	First press for 60-80s Second press for 30-40s
<ol style="list-style-type: none"> 1. Print on sublimation paper, mirror image; 2. Tape the image on the bottle, put the bottle into the heater, and adjust the printing pressure; 3. Take out the bottle, and let the machine preheat to 180°C . You can put one unused bottle into the heater while it's preheating to extend its life.; 4. As the machine heats up to 180°C , take out the unused bottle, put the printed bottle inside and press it for 60-80 seconds; 5. If you want to print a full image around the bottle, rotate it 180 degrees, and press it again for 30-40 seconds; 6. If you want to print a partial image in the middle of the bottle, one press for 60-80 seconds is enough; 7. Peel off the image, <p>Tip:</p> <ol style="list-style-type: none"> 1. Take off the bottle lid before printing; 2. Wear heat-resistant gloves to avoid burns; 3. Adjust printing time according to the bottle size. 		
Enamel Mug	180°C / 360 °F	280
<ol style="list-style-type: none"> 1. Print on sublimation paper, mirror image; 2. Tape the image on the mug, put two enamel mugs into the heater bottom to bottom, and adjust the printing pressure; 3. Take out the mugs, and let the machine preheat to 180°C . You can put one unused mug into the heater while it's preheating to extend its life.; 4. As the machine heats up to 180°C , take out the unused mug, and put the printed mug inside. The rim part of the mug is exposed on the outside of the heater and place a same size enamel mug against the bottom of the printed mug to ensure even pressure; 5. Take out the mug when the time is up; 6. Peel off the image. <p>Tip:</p> <ol style="list-style-type: none"> 7. Needs to be printed with a short heater, because the mugs in long heaters cannot be placed against each other to ensure even pressure. 		

FAQ

ORDERING

We have 45+ local agents and distributors in many countries around the world, you can email us the products you are interested in, the quantity and your address at info@craftheatpress.com and we will match you with the nearest distributor or agent according to your location so that you can receive the products quickly.

For mass production and customization, email us at info@craftheatpress.com directly and we will place your order according to the requirements.

SHIPPING

Shipping Method & Time

We can ship your order by express, air or sea depending on the urgency of the order. It takes about 1 month from China to Western Europe and North America, and about 15 days to Southeast Asia. The shipping can be arranged from Guangzhou, Shenzhen, Shanghai, Ningbo or Qingdao.

If you have your own account # or shipping agent, please provide it directly, and we can contact them to pick up your order.

CUSTOM EQUIPMENT

In order to meet the market's demand and elevate your business to a new level. We're happy to provide innovative printing solutions for you to customize your own equipment. Our OEM/ODM service covers a wide range of equipment, contact our sales team for more details: info@craftheatpress.com

HOW CAN I APPLY FOR BECOMING A REGIONAL AGENT?

We feel greatly honored to build up partnership relations with any potential individuals, organizations and corporations on the basis of honesty, mutual trust and benefit, and great services to our clients. On the condition that you agree with the above principles, please contact us immediately for detailed negotiation. Before signing the sole regional distributor contract, we would ask the candidate to demonstrate the capability of developing the market as the fulfillment of mutual trust.

WARRANTY

All Heat Presses from us are warranted for one year from the date of purchase. Heating elements that come with the heat press are warranted for six months. If you experience difficulty during the installation or subsequent use of the craft heat press, we also offer lifetime technical support to our customers worldwide.

PRODUCT

Which Heat Press Is Right For Me?

[Mug/Tumbler Heat Press, Garment Heat Press or Sublimation Oven?](#)

For different types of heat presses, first, you need to categorize them according to the needs, for mugs/tumblers you'd better choose mug/tumbler heat press, for flat items you need to choose garment heat press. Subsequently, you need to choose the specific heat press according to the products you often print. For example, if you often print 11oz ceramic mugs, we would recommend our new Craft Hobby Mug Press. For more details, feel free to contact our sale team at info@craftheatpress.com

Below is a short description of our different types of heat presses.

[Mug/Tumbler Heat Presses](#) are designed for printing mugs & tumblers of different sizes. We have developed many models, they have adjustments and changes in the shape, color scheme, machine structure, digital control box and so on. All heat presses have a wide selection in their heating attachments, so you can discover more possibilities in one heat press.

[Garment Heat Presses](#) are perfect for all sublimatable flat items, t-shirts, socks, photo panels, ornaments, shopping bags, blankets & more! We also have a number of different garment heat presses, and the most distinguishing difference is the size of their plate board. If you like to do crafts, then you can go for a smaller size, or if you're going to start a garment customization business, you can go for one that is more in line with the size of the clothes.

[Sublimation Ovens](#) are great for all sorts of irregularly shaped mugs, tumblers & pet bowls that can't be sublimated by mug & tumbler heat press. Not only can it print multiple items at once, but there is no size limit from 1.5oz to 64oz! No need to adjust the pressure, just adjust the right parameters and place the items to be printed together in the oven, very efficient.

craft express[®]



+86-13147045331



info@craftheatpress.com



+86-20-83375464/
83314360/83311437



www.craftheatpress.com



Office

Rm 4411, Grandview East International
Plaza, No 372, Huanshi Dong Road, Yuexiu
District, 510060 Guangzhou, China



Warehouse

Kehong Industrial Zone, No. 101
Tianyi East Ring Road, Nansha District,
Guangzhou, 511453, China



Factory

Xiegang Town, Dongguan City, China



CraftExpress

VERSION: 202410