

Combo Press Machine (8-in-1)



Manual of 
**FLAT
CLAMSHELL
PRESS**



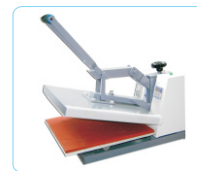
Model No.:JTSB3C



Model No.:JTSB3D



Model No.:JTSB3H



Model No.:SB3A

This manual is applicable for flat press serial products



Model No:JTSB3D

Structure:

1 Pressure Handle	5 Time Controller
2 Pressure-adjusting Knot	6 Silicon Flat Mat
3 Heat Platen	7 Work Table
4 Temperature Controller	

Description:

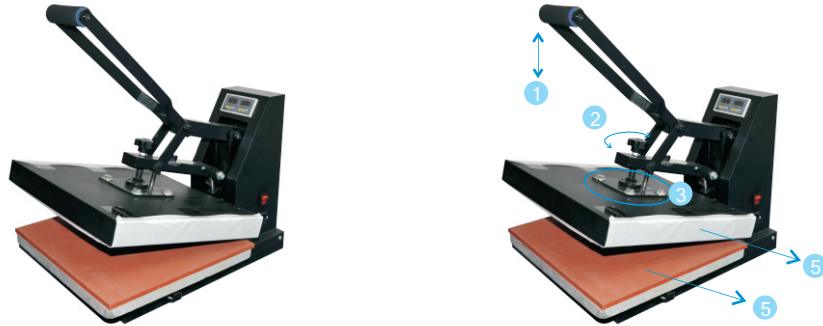
Voltage: 220V, 110V;
 Heating platen size: 38cm×38cm / 40×50cm / 40×60cm
 Temperature and Time:
 Textile:180°C 100-120 S' / Gadgets:180°C 60-120S' / Tiles:180°C 300 S' / Cotton
 T-shirts : 180°C 12-15S' / T-shirts : 180°C 12-15S'
 Packing: Carton
 Package Size : 770*520*500mm
 Weight: 35Kg
 Specification: Flat heating, could transfer anything flat, T-Shirt, Puzzle, Tile, Mouse pad and Glass Cutting Board etc.

Features:

1. Mature technology guarantees clear and vivid printing;
2. Strong built with long durability;
3. Customized choice with muti heating mats;
4. Energy conservative and eco safe.
- 5.The automatic temperature control give exact application temperature;
- 6.The heating coils and the heating board are integrated, providing average heat distribution and further making the device safe and durable;
7. A layer of anti sticking Teflon is added on the heat board to make printings better;
- 8.The procedure is controlled electronically, ended by a completing signal;
- 9.The pressure could be easily adjusted as needed;
- 10.Foaming silicon designed on the baseboard is capable of withstanding the temperature as high as 350°C ;
- 11.Taking into account of its great advantages, the device is recognized economical and practical;

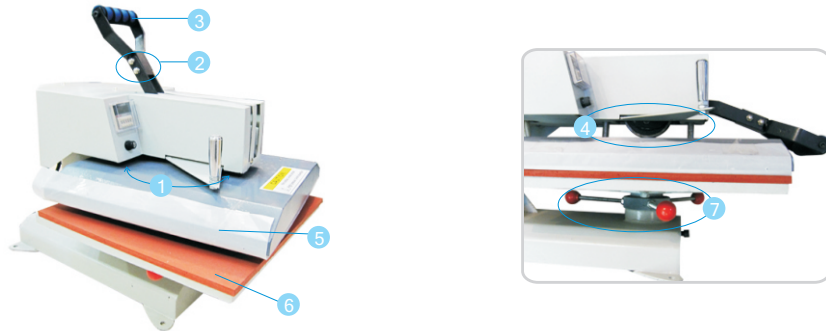
Instruction of Operation

Control Panel Operation



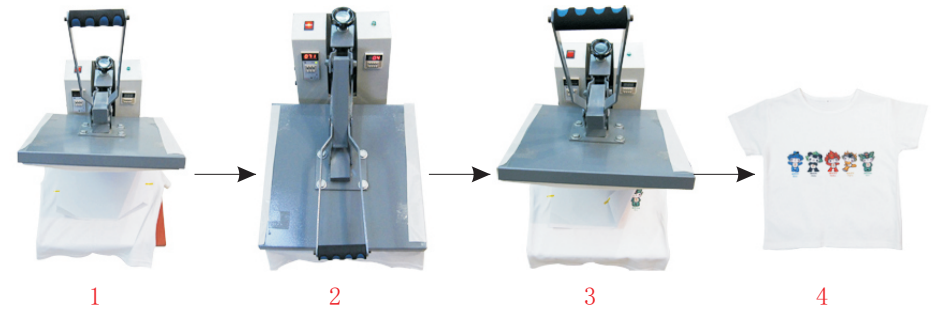
• How to manipulate this flat clamshell press

1. Pull up or press down the pressure handle.
2. Turn the pressure adjustment screw to adjust the press.
3. Fix or loosen the metal board by turning the screws.
4. Use both sides of the teflon sheet by overturning it.
5. Use both sides of the silicon flat mat by overturning it.



• How to manipulate this swing away press

1. Swing away the flat board by the arm
2. Fix or loosen the pressure handle by turning the screws.
3. Press handle
4. Fix or loosen the metal board by turning the screws.
5. Both side of the teflon sheet as well as the silicon flat mat are usable.
6. Adjust the pressure by turning the pressure adjustment screw.



• Instruction for flat clamshell press

1. Stick the printed paper on the suitable place of the printing item and then put the item onto the silicon flat mat.
2. Set the proper time and temperature, then press down the pressure handle and start printing.
3. When the machine alarms, switch off and lift the press handle.
4. Take out the item quickly and tear off the paper swiftly. (Caution Hot)

• Tips:

The operation process and setting of SB3B/SB6D flat clamshell press are the same as SB3A.

The operation process and setting of SY88/SY99 swing away press are almost the same as SB3A, except that the swing away press can be swung away by 360 degrees.

Parameters

Item	Temperature (°C)	Time (S)	Notice
Mug	180 180	10 100-120	1. Adjust and take the proper pressure; 2. Stick the paper to the mug; 3. Adjust the height.
Plate	180	120	1. The plate should be placed evenly; 2. The pressure must be moderate; 3. Time and temperature must be synchronized. Counting 210s time; 4. A mirror image printed.
Ceramic Tile	180-190	150-200 240-360	1. Adjust and take the proper pressure; 2. Stick the paper to the tile closely. Plaster the picture on the gel pad. 3. Make the picture lying cross. 4. A mirror image printed.
Metal Board	180	120	1. Stick the paper on the board; 2. Place the picture horizontally; 3. Remove the film on the surface; 4. A mirror image printed.
Key Chain	180	100	1. Remove the film on the surface. 2. Fit the picture. 3. A mirror image printed.
T-shirt(Printed by Sublimation Ink)	180-190	120	1. For 50% cotton light color T-shirt. 2. A mirror image printed. 3. Sufficient pressure. (Notice: Suitable for silk, fiber, terylene etc material)
T-shirt(Light Transfer Paper)	180-185	25	1. For cotton T-shirt. 2. A mirror image printed. 3. Sufficient pressure. 4. Remove transfer paper as soon as possible.
T-shirt (Dark Transfer Paper)	180-185	25	1. For deep color T-shirt. 2. Do not print mirror image. 3. Sufficient pressure. 4. Remove the transfer paper 10m later. (Notice: Suitable for deep color, just like black, deep red, deep green, etc.)
Mouse Pad	180	120	1. Fit the paper to the pad. 2. A mirror image printed 3. Sufficient pressure.

Parameters

Item	Temperature (°C)	Time (S)	Notice
Compact Mirror	180	100-120	1. Fit the paper on the surface. 2. A mirror image printed. 3. Sufficient pressure. 4. Remove the film on the surface.
CD Case	180	100-120	1. Fit the paper on the surface. 2. A mirror image printed. 3. Sufficient pressure. 4. Remove the film on the surface.
Cigarette Case	180	100-120	1. Fit the paper on the surface. 2. A mirror image printed. 3. Sufficient pressure. 4. Remove the film on the surface.
Sublimation Lighter	180	180-240	1. Fit the paper on the surface. Both faces could be printed. 2. A mirror image printed. 3. The pressure must be moderate. 4. The picture faces to the gel.
Puzzle	180 165-180	120 100-120	1. Fit the paper on the surface. 2. A mirror image printed. 3. Sufficient pressure.
Aluminum Bottle	170 165-170	10 100	1. The height of the picture is lower than 10cm when designed. 2. The pressure must be moderate. 3. Open the bottle when pressing. 4. A mirror image printed.
Coffee Mug	180 180	10 120	1. The height of the picture is lower than 4.5cm when designed. 2. Do not touch the mug wrap when pressing.
Metal Business Card	180	120	1. The picture must be clearly when designed. 2. The two faces must be pressed at the same time. 3. Sufficient pressure.
Pillow	180	120	1. Be careful. Do not touch the heat board when pressing. 2. Sufficient pressure.
Small Business Card	180	120	Remove the film before pressin
Animal Mug	180 180	10 120	Be careful do not broke the handle.

